



SUZUKI MARINE

Parts Book

DT 5 (1978-1979)



1703 Hwy 35 So., Laurence Harbor, NJ 08879

(732) 264-7176

(800) 338-0645 FAX (732) 264-2472

www.brownspoint.com

PREFACE

This parts catalogue has been arranged to include all prior modification as the final edition.

No revised edition will be issued any more and be sure to make use of this in good keeping.

Upon receipt of this final edition, the old catalogue should be thrown away.

This parts catalogue covers the list of all service parts for SUZUKI DT2~DT9 (C, D, F).

A. INSTRUCTIONS FOR QUOTING THE CATALOGUE

1. DIMENSIONS

Dimensions of the parts in this catalogue are indicated in unit millimeters.

2. ABBREVIATIONS

Abbreviations used in this catalogue are as follows:

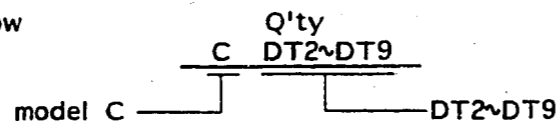
| | | | |
|---------|------------------------|--------------------------|-------------------|
| AR | : As required | NT | : Number of teeth |
| ASSY | : Assembly | OPT | : Optional |
| E.No. | : Engine Number | OS | : Over Size |
| F.No. | : Frame Number | STD | : Standard |
| d | : Diameter of material | T | : Thickness |
| ID | : Inside diameter | US | : Under size |
| OD | : Outside diameter | W | : Width |
| L | : Length | S,L,UL,LL : Transom type | |
| LH | : Left hand side | | |
| RH | : Right hand side | | |
| ~100045 | : Up to F.No.-100045 | | |
| 100046~ | : From F.No.-100046 | | |

12 x 34 x 5.6Figures in the description column show the dimensions of parts.
 | | |
 ID OD T(or W,L)

To 12340-56781 (Parts No.) : indicates that the parts number was changed to 12345-56781 and the new parts are interchangeable with the former ones but the former ones are not interchangeable with new ones.

From 12345-56781 (Parts No.) : indicates that the former and new parts are interchangeable with each other and both are usable.

The number of letter shown below Q'ty indicate the MODEL NAME as shown right side.



3. INNER PARTS OF ASSEMBLY

Parts number that have a period (.) mark in front of the part description on a text page are separately serviced parts of the assembly.

4. MODIFICATION NOTICE

A parts bulletin will be sent to you on all occasions when changes in parts occur, including interchangeable modifications between new parts and old ones.

5. NOTE

5-1. There are some different parts from those of production models among spare parts for the administrative reasons and common use of them with other models.

5-2. In respect of rubber hoses and vinyl tubes, please be sure to use them by cutting off according to the length mentioned on parts catalogue or what is actually required on the vehicle.

5-3. Note that the drawings on the illustration page are for ready reference of spare parts number, not to be used as an assembly manual.
 When assembling, use "SUZUKI SERVICE MANUAL".

6. SPECIFICATION CODE

This catalogue contains the parts for the model designed for the following spec.;

spec. code: DT2C (E1, E28), DT2D (E1), DT2F (E1), DT3.5F (E1, E16),
 DT4.5C (E1, E28), DT4D (E1), DT5D (E1, E3, E13),
 DT5F (E1, E3, E13)
 DT7.5C (E1, E13, E28), DT7.5D (E1, E13),
 DT7.5F (E1, E9, E13)
 DT9C (E1, E13, E28, E37), DT9D (E1, E13),
 DT9F (E1, E9, E13)

7. SERIAL FRAME NUMBER

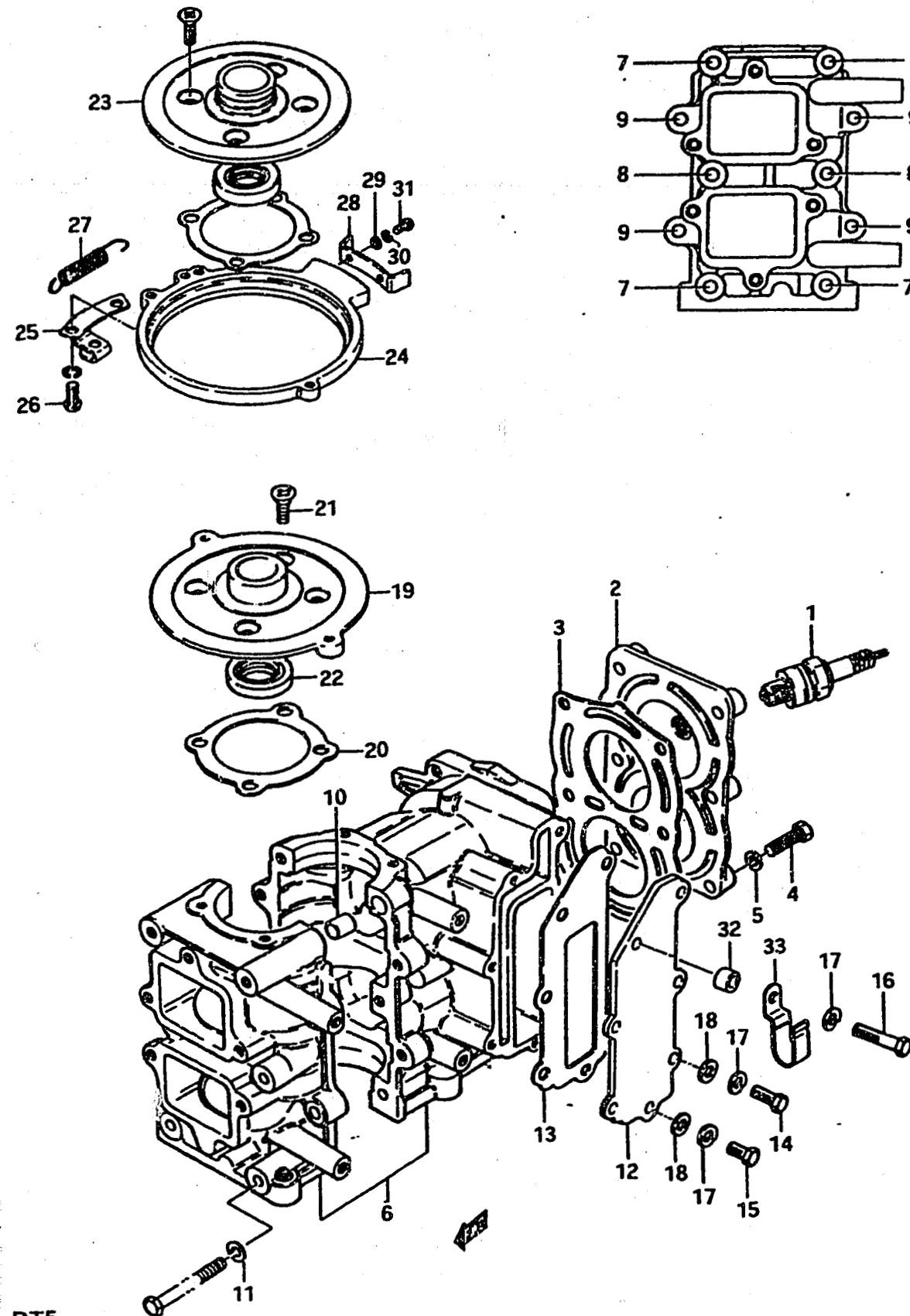
C-10001~, D-10001~, F-10001~

FIG. 50

G - 3

1

FIG. 50 CYLINDER

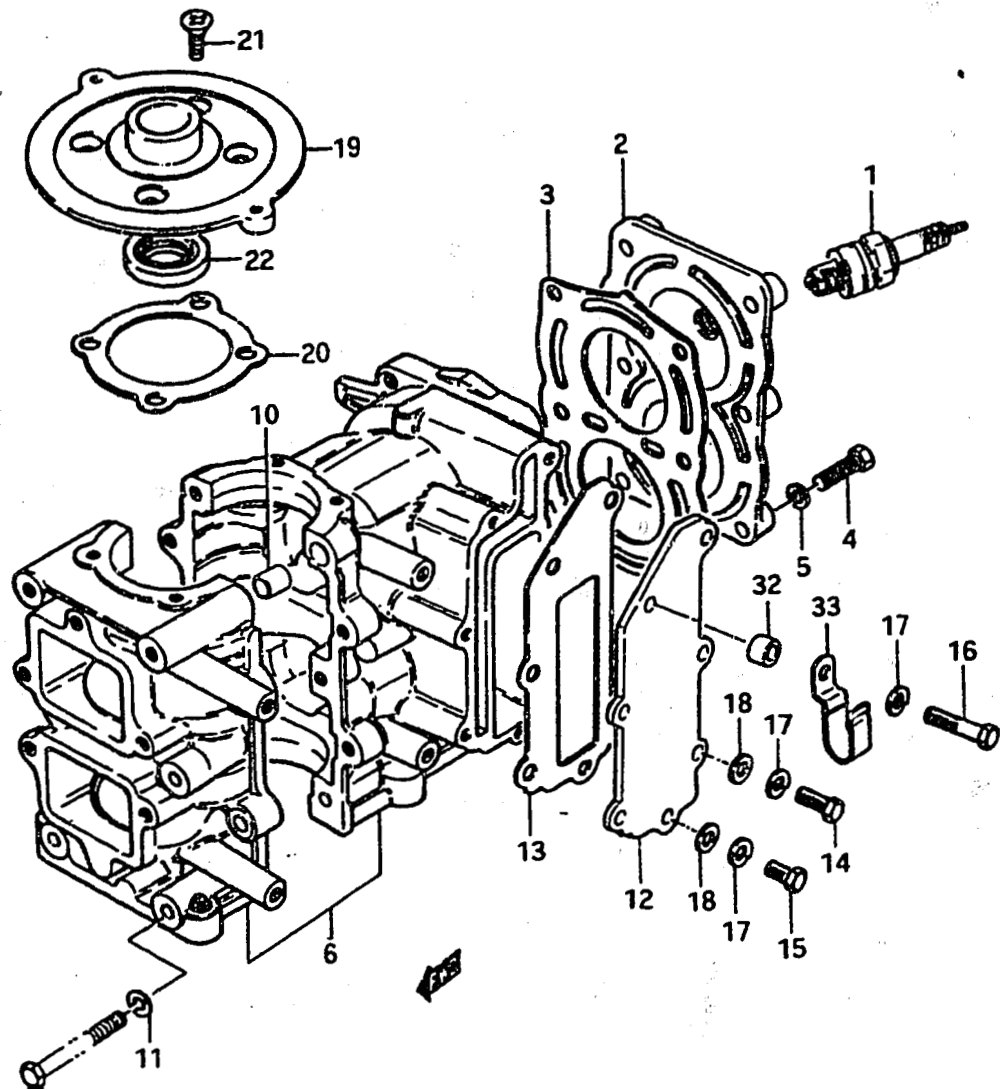
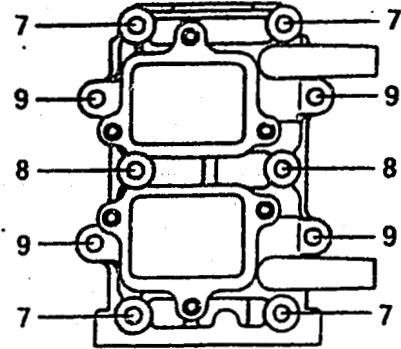
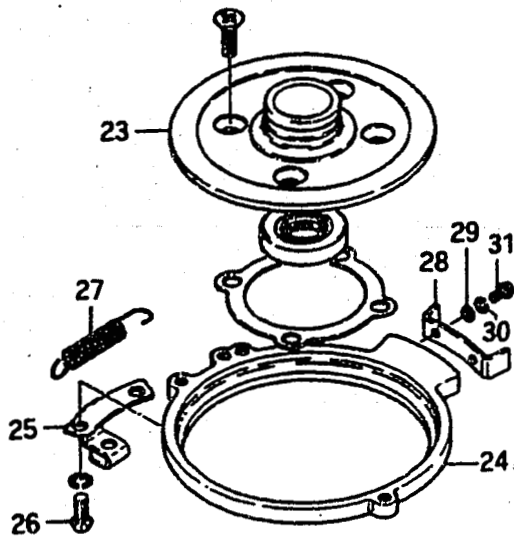


| Ref. No. | Part No. | Description | Q'ty | | Remarks |
|----------|-----------------|--|------|----|--------------------|
| | | | D | F | |
| 1-1 | 09482-00141 | SPARK PLUG ASSY | 2 | 2 | BPR6HS,NGK |
| 1-2 | 09482-00084 | SPARK PLUG ASSY | 2 | 2 | E13,BP6HS,NGK |
| 2-1 | 11111-98500-01J | CYLINDER HEAD | 1 | - | to 11111-98501-01J |
| 2-2 | 11111-98501-01J | CYLINDER HEAD | - | 1 | |
| 3 | 11141-98500 | GASKET, cylinder head | 1 | 1 | |
| 4-1 | 01107-06308 | BOLT, cylinder head | 6 | - | |
| 4-2 | 09100-06090 | BOLT, cylinder head (6x30) | - | 6 | |
| 5 | 08321-21068 | LOCK WASHER | 6 | 6 | |
| 6-1 | 11300-98850-01J | CYLINDER SET | 1 | - | |
| | | to (11300-98851-01J)+(14151-98502)+(14141-98501-01J)+(01107-06168) +(08321-21068)+(08322-21068) | | | |
| 6-2 | 11300-98851-01J | CYLINDER SET | 1 | 1 | DT5D-17839~ |
| 7 | 01107-06608 | •BOLT 1 | 4 | 4 | |
| 8 | 01107-06508 | •BOLT 2 | 2 | 2 | |
| 9 | 01107-06308 | •BOLT 3 | 4 | 4 | |
| 10 | 04211-09109 | •DOWEL PIN | 2 | 2 | |
| 11 | 08321-21068 | •LOCK WASHER | 10 | 10 | |
| 12-1 | 14141-98500-01J | COVER, exhaust | 1 | - | |
| 12-2 | 14141-98501-01J | COVER, exhaust | 1 | 1 | to 14141-98502-01J |
| 12-3 | 14141-98502-01J | COVER, exhaust | - | 1 | |
| 13-1 | 14151-98500 | GASKET, exhaust cover | 1 | - | to 14151-98501 |
| 13-2 | 14151-98501 | GASKET, exhaust cover | 1 | - | |
| 13-3 | 14151-98502 | GASKET, exhaust cover | 1 | 1 | |
| 14 | 01107-06208 | BOLT | 6 | 5 | |
| 15 | 01107-06168 | BOLT | - | 1 | |
| 16 | 01107-06308 | BOLT | - | 1 | |
| 17 | 08321-21068 | LOCK WASHER | 6 | 7 | |
| 18 | 08322-21068 | WASHER | - | 6 | |

FIG. 50

G - 4

FIG. 50 CYLINDER



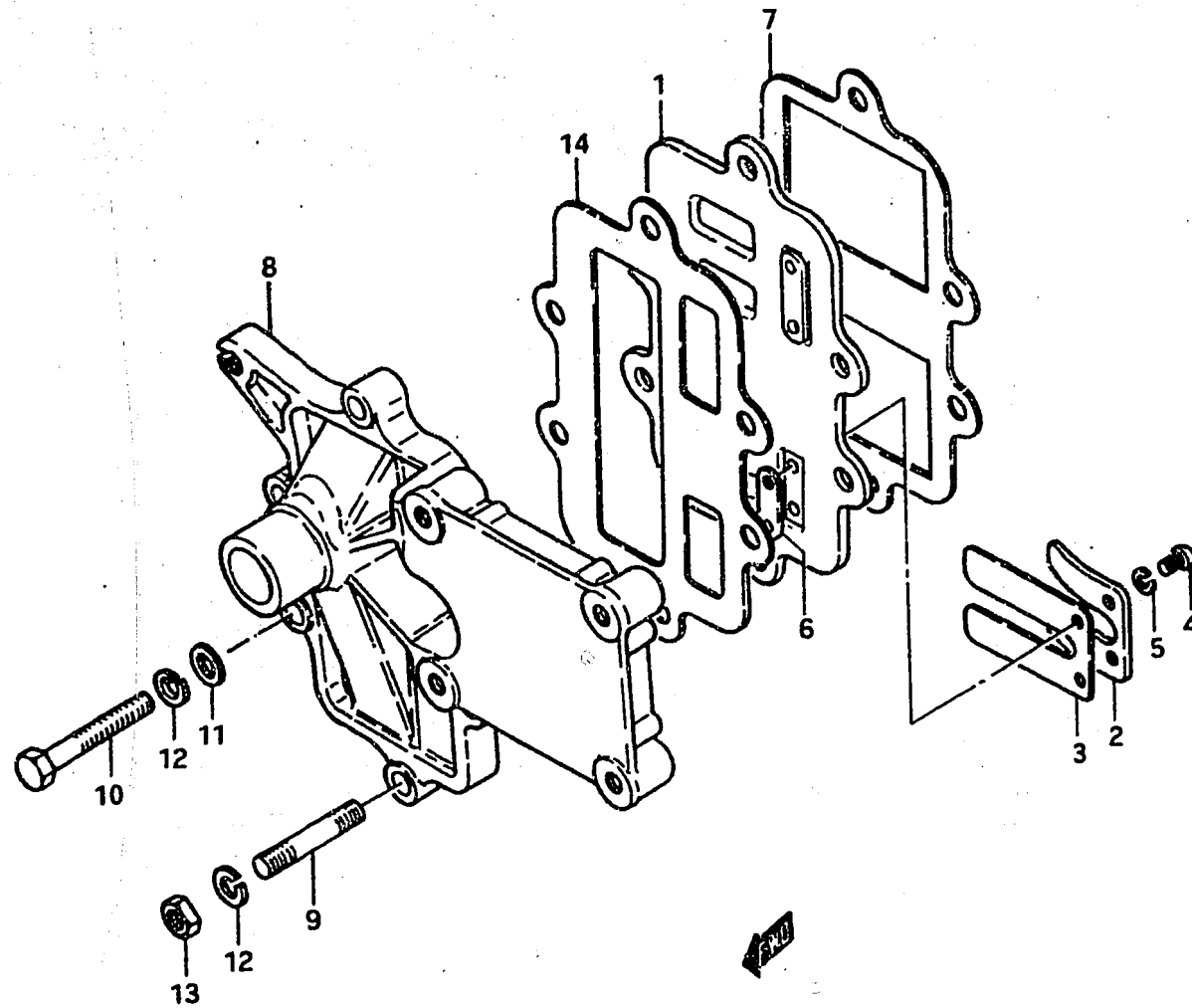
| Ref. No. | Part No. | Description | Q'ty | | Remarks |
|----------|-----------------|-----------------------------|------|---|---------|
| | | | D | F | |
| 19 | 11411-98510-01J | HOUSING, upper oil seal | 1 | 1 | |
| 20 | 11413-98500 | GASKET | 1 | 1 | |
| 21 | 02122-06168 | SCREW | 4 | 4 | |
| 22 | 09283-20006 | OIL SEAL, upper crank shaft | 1 | 1 | |
| 23 | 11411-98500 | HOUSING, upper oil seal | 1 | 1 | E3 |
| 24 | 19151-98500-01J | RETAINER, stator | 1 | 1 | |
| 25 | 19152-98500 | BRACKET, retainer | 1 | 1 | |
| 26 | 02112-05128 | SCREW | 2 | 2 | |
| 27 | 09443-09009 | SPRING, retainer | 1 | 1 | |
| 28 | 19172-98500 | STOPPER, retainer | 1 | 1 | |
| 29 | 08322-21058 | WASHER | 2 | 2 | |
| 30 | 08321-21058 | LOCK WASHER | 2 | 2 | |
| 31 | 02112-05128 | SCREW | 2 | 2 | |
| 32 | 09180-06030 | SPACER | - | 1 | |
| 33 | 09403-06307 | CLAMP, high tension cord | - | 1 | |

FIG.51

G - 5

3

FIG.51 REED VALVE

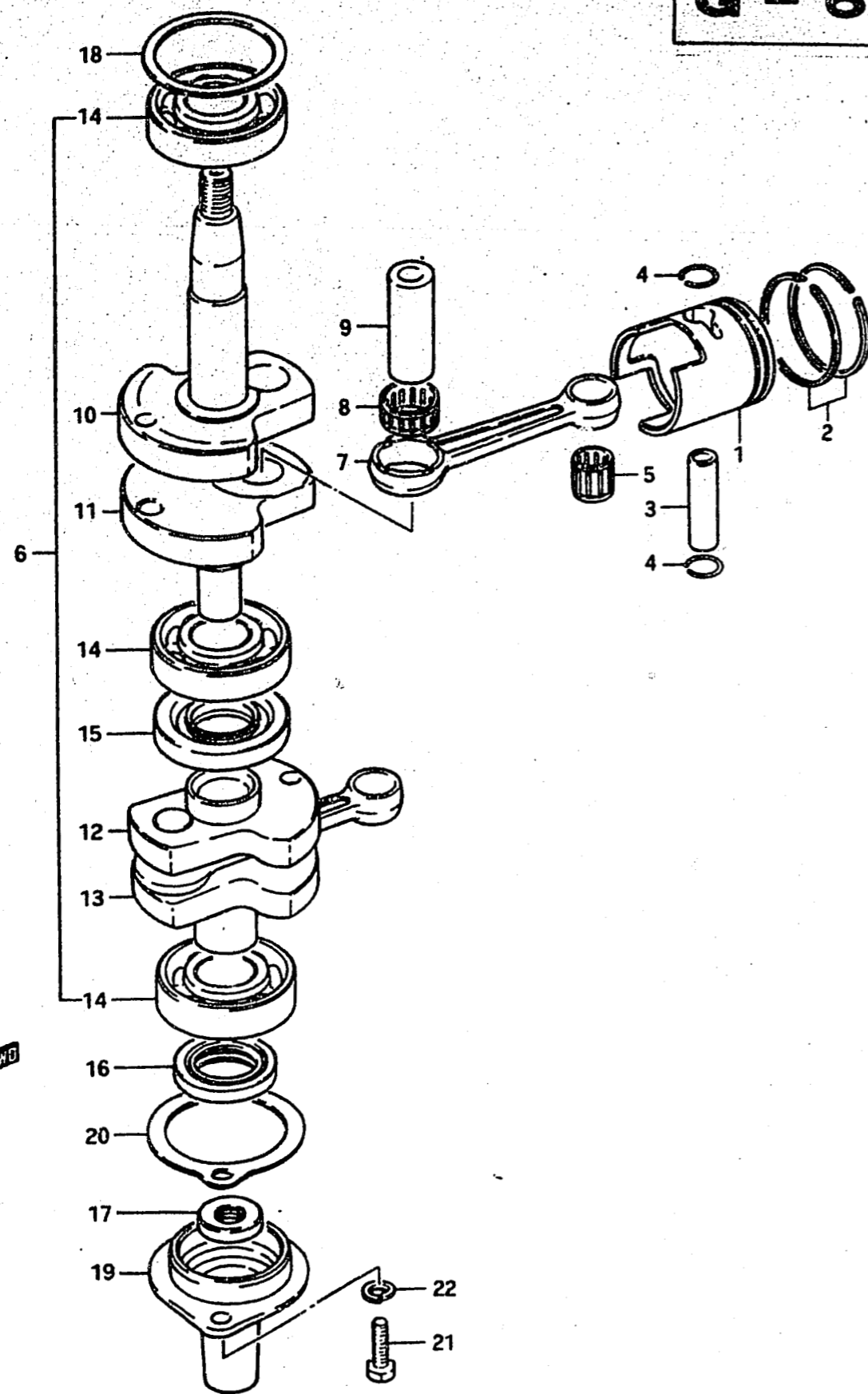


| Ref. No. | Part No. | Description | Q'ty | | Remarks |
|----------|-----------------|----------------------|------|---|---------|
| | | | D | F | |
| 1 | 13150-98500 | VALVE ASSY, reed | 1 | 1 | |
| 2 | 13152-19010 | •STOPPER, reed valve | 2 | 2 | |
| 3 | 13153-19012 | •VALVE, reed | 2 | 2 | |
| 4 | 02112-03088 | •SCREW | 4 | 4 | |
| 5 | 08321-21038 | •LOCK WASHER | 4 | 4 | |
| 6 | 13154-98500 | •PLATE, reed valve | 2 | 2 | |
| 7 | 13122-98500 | GASKET, valve seat | 1 | 1 | |
| 8 | 12481-98500-01J | CASE, inlet | 1 | 1 | |
| 9 | 01411-06258 | STUD BOLT | 4 | 4 | |
| 10 | 01107-06308 | BOLT, inlet | 2 | 2 | |
| 11 | 08322-21068 | WASHER | - | 2 | |
| 12 | 08321-21068 | LOCK WASHER | 6 | 6 | |
| 13 | 08310-11068 | NUT | 4 | 4 | |
| 14 | 13121-98500 | GASKET, inlet | 1 | 1 | |

FIG. 52

G - 6

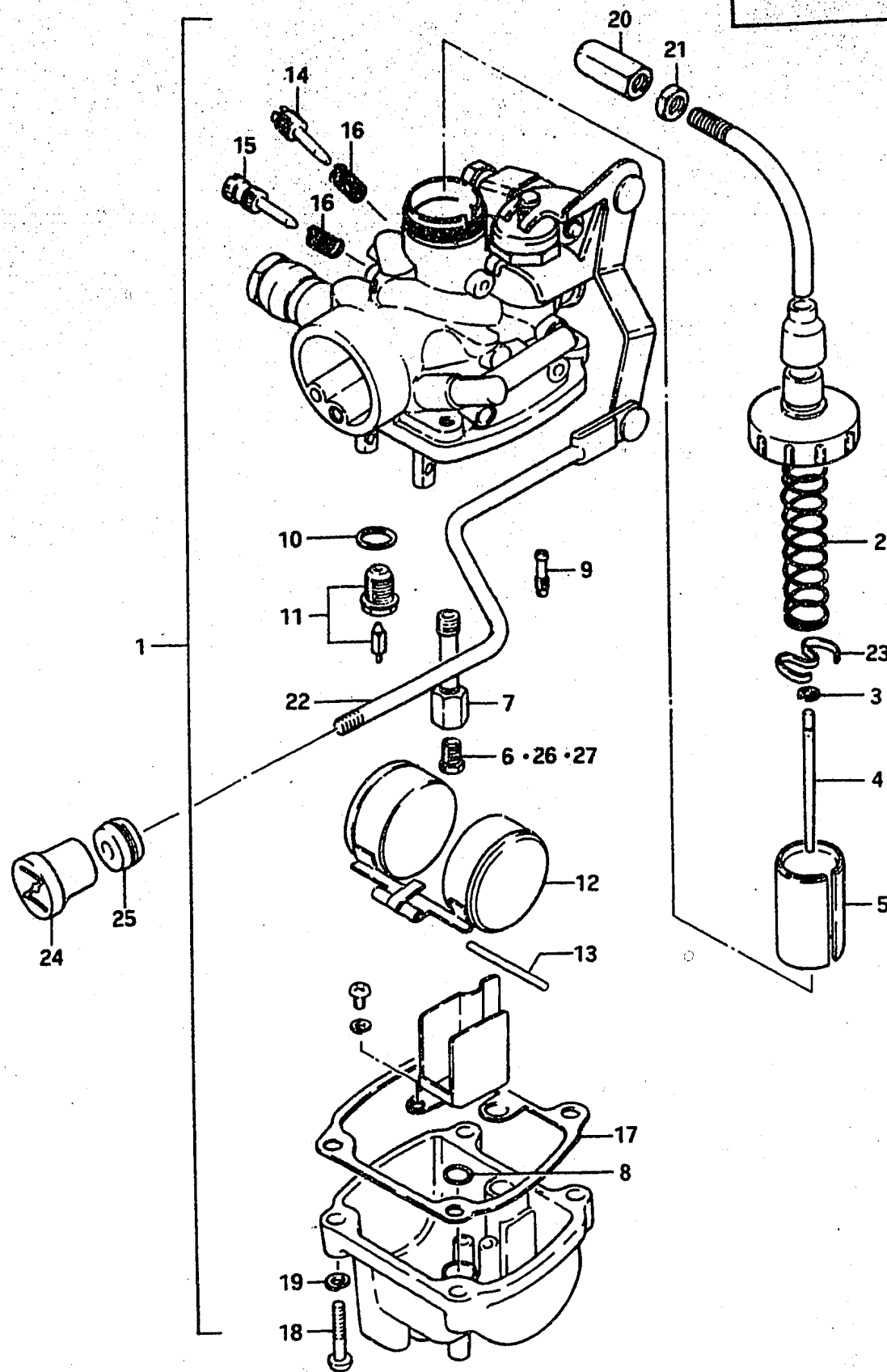
FIG. 52 CRANKSHAFT



| Ref. No. | Part No. | Description | Q'ty | | Remarks |
|----------|-----------------|-----------------------------|---------|---|-------------------------------------|
| | | | D | F | |
| 1-1 | 12110-98500 | PISTON | 2 | 2 | |
| 1-2 | 12110-98500-025 | PISTON | 2 | 2 | OS:0.25,OPT |
| 1-3 | 12110-98500-050 | PISTON | 2 | 2 | OS:0.5,OPT |
| 2-1 | 12140-36232 | RING SET, piston | 2 | 2 | from 12140-36231 |
| 2-2 | 12140-98501-025 | RING SET, piston | 2 | 2 | OS:0.25,OPT from 12140-98500-025 |
| 2-3 | 12140-36232-050 | RING SET, piston | 2 | 2 | OS:0.5,OPT from 12140-36752 |
| 3 | 12151-02000 | PIN, piston | 2 | 2 | |
| 4 | 09381-12001 | CIRCLIP, piston pin | 4 | 4 | |
| 5 | 09263-12003 | BEARING (12x16x15.8) | 2 | 2 | |
| 6 | 12200-98501 | CRANKSHAFT ASSY | 1 | 1 | from 12200-98841 |
| 7 | 12161-35000 | ROD, connecting | 2 | 2 | |
| 8-1 | 09263-16014 | BEARING, crank pin | 2 | 2 | |
| 8-2 | 09263-16016 | BEARING, crank pin | - | 2 | from 09263-16014 |
| 9 | 12211-98000 | PIN, crank | 2 | 2 | |
| 10 | 12221-98500 | CRANKSHAFT, upper | 1 | 1 | |
| 11 | 12231-98500 | WHEEL, upper crankshaft | 1 | 1 | |
| 12 | 12232-98500 | WHEEL, lower crankshaft | 1 | 1 | |
| 13 | 12240-98500 | CRANKSHAFT, lower | 1 | 1 | |
| 14 | 08113-62040 | BEARING | 3 | 3 | |
| 15 | 09289-22004 | OIL SEAL, middle crankshaft | 1 | 1 | |
| 16-1 | 09283-20022 | OIL SEAL, lower crankshaft | 1 | 1 | to 09283-20035 |
| 16-2 | 09283-20035 | OIL SEAL, lower crankshaft | - | 1 | |
| 17 | 09283-10001 | OIL SEAL, driveshaft upper | 1 | 1 | to 09283-10002 |
| 18 | 09160-35001 | SHIM (35x46.5x0.5) | AR(0~1) | | |
| 19-1 | 11431-98500 | HOUSING, lower oil seal | 1 | 1 | to 11431-98501 |
| 19-2 | 11431-98501 | HOUSING, lower oil seal | - | 1 | F-14915~ |
| 20 | 11433-98500 | GASKET, lower oil seal | 1 | 1 | |
| 21 | 09100-06020 | BOLT (6x20) | 2 | 2 | |
| 22 | 09162-06001 | LOCK WASHER | 2 | 2 | |

FIG. 53

G-7



5

FIG. 53 CARBURETOR

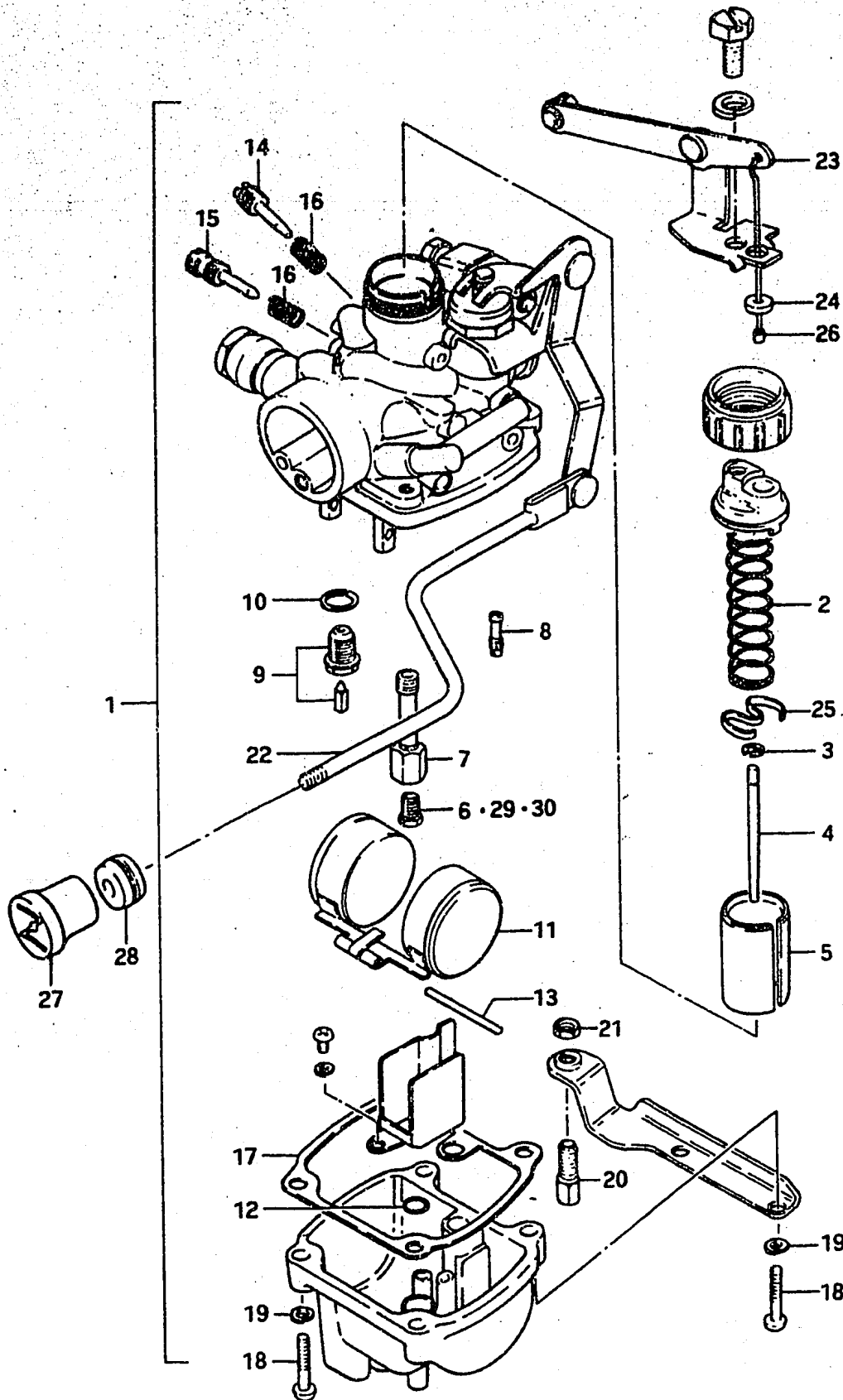
| Ref. No. | Part No. | Description | Q'ty | | Remarks |
|----------|-------------|------------------------------|------|---|----------------|
| | | | D | F | |
| 1 | 13200-98510 | CARBURETOR ASSY | 1 | 1 | stamp:98510 |
| 2 | 13573-98500 | •SPRING, throttle valve | 1 | 1 | |
| 3 | 13394-12110 | •CLIP, needle | 1 | 1 | |
| 4 | 13383-46160 | •NEEDLE, jet | 1 | 1 | |
| 5 | 13551-98500 | •VALVE, throttle | 1 | 1 | CA:2.0 |
| 6 | 09491-36002 | •JET, main | 1 | 1 | 180 |
| 7 | 09494-00235 | •NOZZLE, needle | 1 | 1 | |
| 8 | 13691-98010 | •O RING, float chamber | 1 | 1 | |
| 9 | 09492-30003 | •JET, pilot | 1 | 1 | 30 |
| 10 | 13392-01010 | •GASKET, valve seat | 1 | 1 | |
| 11 | 13370-96210 | •VALVE ASSY, needle | 1 | 1 | |
| 12 | 13252-02010 | •FLOAT | 1 | 1 | |
| 13 | 13254-01010 | •PIN, float | 1 | 1 | |
| 14 | 13269-01010 | •SCREW, pilot air | 1 | 1 | |
| 15 | 13267-93600 | •SCREW, throttle stop | 1 | 1 | |
| 16 | 13268-95110 | •SPRING, stop screw | 2 | 2 | |
| 17 | 13251-98011 | •GASKET, float chamber | 1 | 1 | |
| 18 | 13601-98010 | •SCREW | 4 | 4 | |
| 19 | 13571-96110 | •LOCK WASHER | 4 | 4 | |
| 20 | 13577-98011 | •ADJUSTER, throttle cable | 1 | 1 | |
| 21 | 13661-03010 | •NUT, adjusting | 1 | 1 | |
| 22 | 13413-98500 | •LEVER, starter | 1 | 1 | |
| 23 | 13581-01010 | •SEAT, throttle valve spring | 1 | 1 | |
| 24 | 13631-99002 | KNOB, starter | 1 | 1 | to 13631-93500 |
| 25 | 09305-04003 | BUSHING, starter guide | 1 | 1 | |
| 26 | 09491-34001 | JET, main | 1 | 1 | OPT,170 |
| 27 | 09491-38001 | JET, main | 1 | 1 | OPT,190 |

FIG. 54 (G-8) : E3

FIG. 54

G - 8

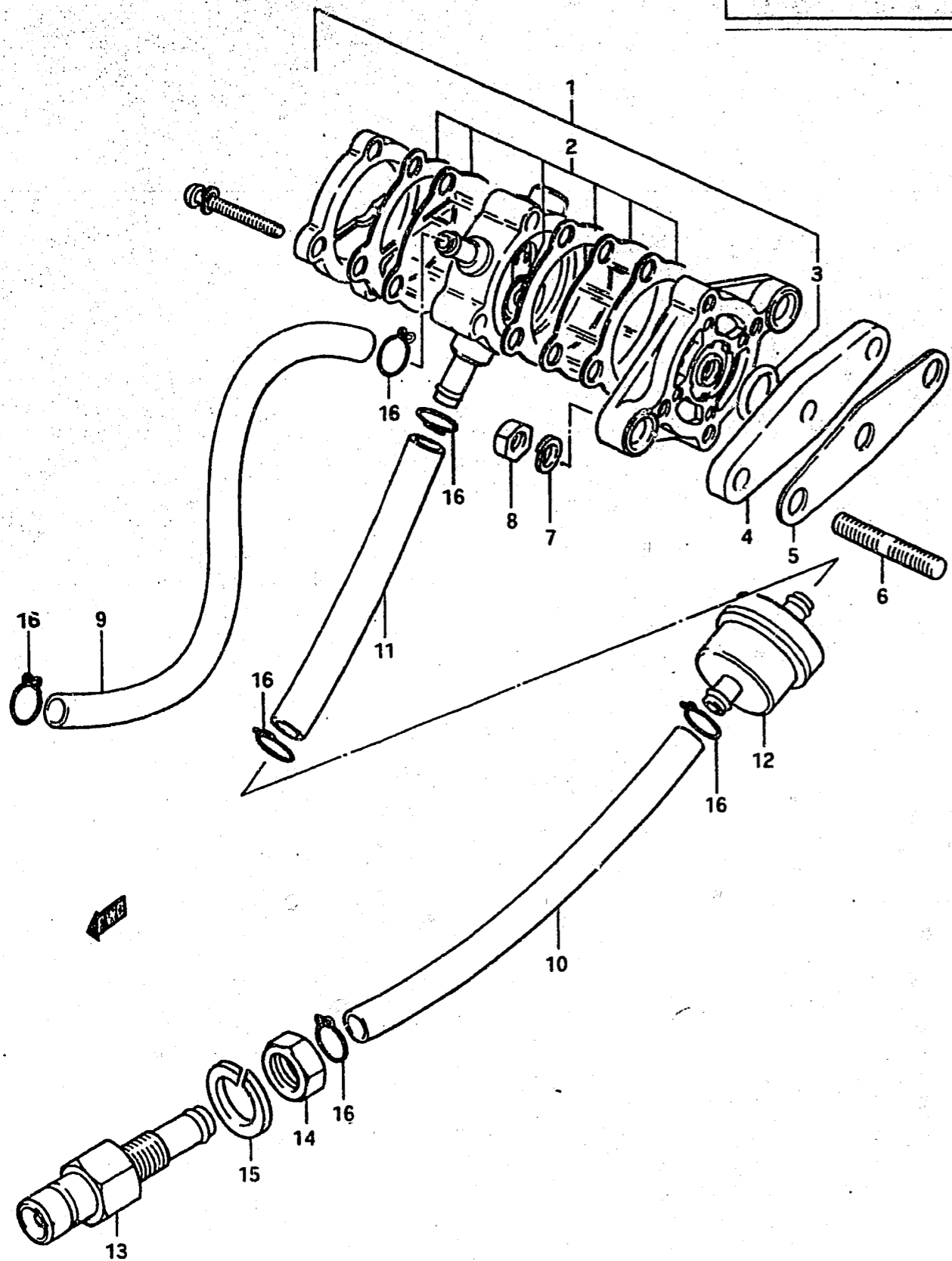
FIG. 54 CARBURETOR (E3)



| Ref. No. | Part No. | Description | Q'ty | | Remarks |
|----------|-------------|------------------------------|------|---|------------------|
| | | | D | F | |
| 1 | 13200-98500 | CARBURETOR (stamp:98500) | 1 | 1 | |
| 2 | 13573-98500 | •SPRING, throttle valve | 1 | 1 | |
| 3 | 13394-12110 | •CLIP, needle | 1 | 1 | |
| 4 | 13383-46160 | •NEEDLE, jet | 1 | 1 | |
| 5 | 13551-98500 | •VALVE, throttle | 1 | 1 | CA:2.0 |
| 6 | 09491-36002 | •JET, main | 1 | 1 | 180 |
| 7 | 09494-00235 | •NOZZLE, needle | 1 | 1 | |
| 8 | 09492-30003 | •JET, pilot | 1 | 1 | 30 |
| 9 | 13370-96210 | •VALVE ASSY, needle | 1 | 1 | |
| 10 | 13392-01010 | •GASKET, valve seat needle | 1 | 1 | |
| 11 | 13252-02010 | •FLOAT | 1 | 1 | |
| 12 | 13691-98010 | •GASKET, valve seat | 1 | 1 | |
| 13 | 13254-01010 | •PIN, float | 1 | 1 | |
| 14 | 13269-01010 | •SCREW, pilot air | 1 | 1 | |
| 15 | 13267-93600 | •SCREW, throttle stop | 1 | 1 | |
| 16 | 13268-95110 | •SPRING, stop screw | 2 | 2 | |
| 17 | 13251-98011 | •GASKET, float chamber | 1 | 1 | |
| 18 | 13601-98010 | •SCREW | 4 | 4 | |
| 19 | 13571-96110 | •LOCK WASHER | 4 | 4 | |
| 20 | 13577-22600 | •ADJUSTER, throttle cable | 1 | 1 | |
| 21 | 13661-03010 | •NUT, adjusting | 1 | 1 | |
| 22 | 13413-98500 | •LEVER, starter | 1 | 1 | |
| 23 | 13564-98500 | •LEVER, carburetor | 1 | 1 | |
| 24 | 13266-99010 | •GASKET, carburetor | 1 | 1 | |
| 25 | 13581-01010 | •SEAT, throttle valve spring | 1 | 1 | |
| 26 | 13552-99010 | •GUIDE, cable | 1 | 1 | from 13552-98500 |
| 27 | 13631-99002 | •KNOB, starter | 1 | 1 | to 13631-93500 |
| 28 | 09305-04003 | BUSHING, starter guide | 1 | 1 | |
| 29 | 09491-34001 | JET, main | 1 | 1 | OPT,170 |
| 30 | 09491-38001 | JET, main | 1 | 1 | OPT,190 |

FIG. 55

G - 9



7

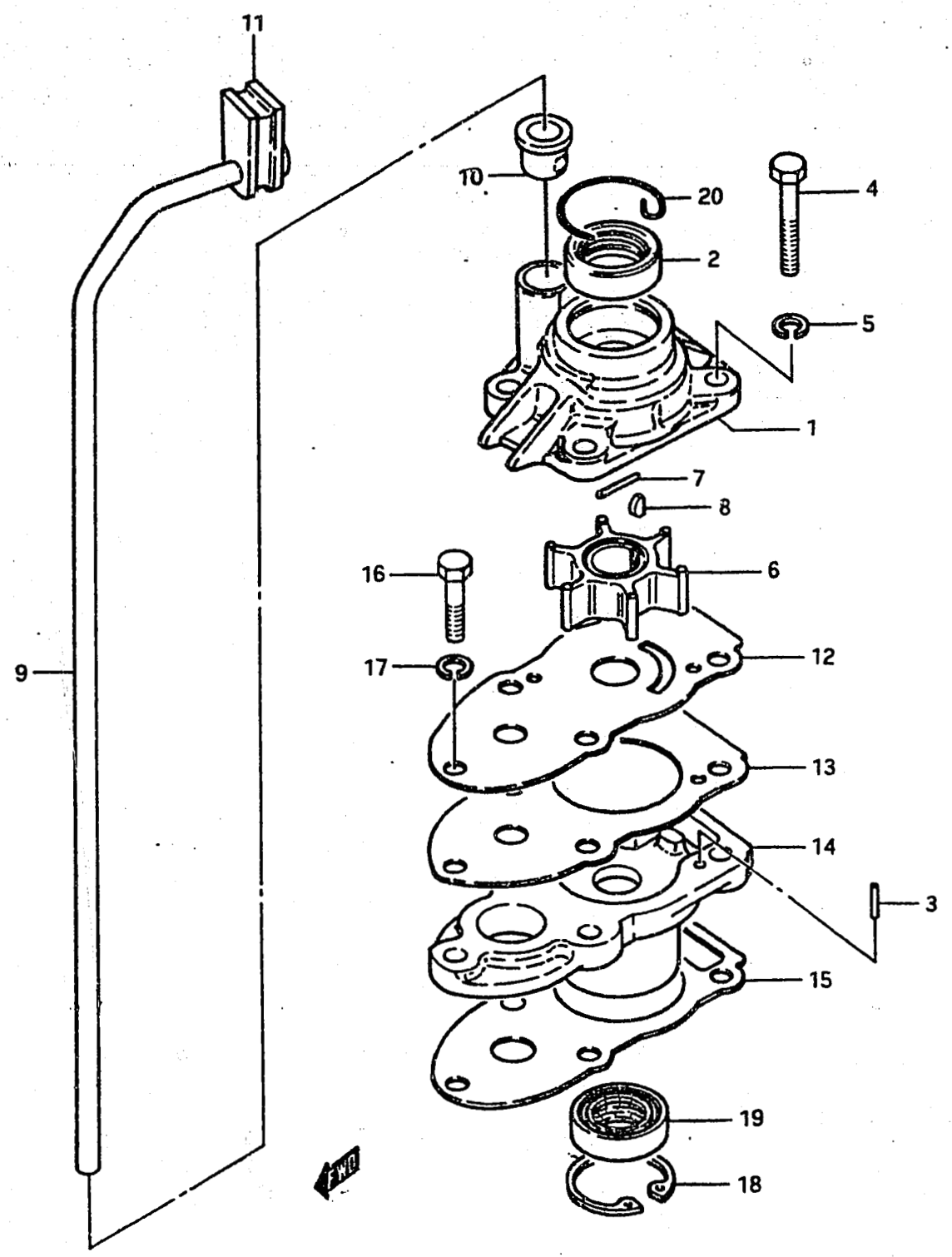
FIG. 55 FUEL PUMP

| Ref. No. | Part No. | Description | Q'ty | | Remarks |
|----------|-------------|-------------------------------|------|---|----------------|
| | | | D | F | |
| 1 | 15100-98500 | PUMP ASSY, fuel | 1 | 1 | |
| 2-1 | 15180-98810 | ·VALVE SET | 1 | - | to 15180-98811 |
| 2-2 | 15180-98811 | ·VALVE SET | 1 | 1 | DT5D-10978~ |
| 3 | 15165-93010 | ·O RING, fuel pump | 1 | 1 | |
| 4 | 15322-98500 | INSULATOR, fuel pump | 1 | 1 | |
| 5 | 15321-98500 | GASKET, fuel pump | 1 | 1 | |
| 6 | 09108-05006 | STUD BOLT | 2 | 2 | |
| 7 | 08321-21058 | LOCK WASHER | 2 | 2 | |
| 8 | 08310-11058 | NUT | 2 | 2 | |
| 9 | 09343-05137 | HOSE, fuel (pump→carburetor) | 1 | 1 | L:500→165 |
| 10 | 09343-05137 | HOSE, fuel (connector→filter) | 1 | 1 | L:500→90 |
| 11 | 09343-05137 | HOSE, fuel (filter→pump) | 1 | 1 | L:500→180 |
| 12 | 15410-98500 | FILTER, fuel | 1 | 1 | |
| 13-1 | 65720-98500 | PLUG, fuel connector | 1 | 1 | to 65720-98501 |
| 13-2 | 65720-98501 | PLUG, fuel connector | - | 1 | to 65720-98502 |
| 13-3 | 65720-98502 | PLUG, fuel connector | - | 1 | to 65720-98520 |
| 14 | 08310-22108 | NUT | 1 | 1 | |
| 15 | 08321-21108 | LOCK WASHER | 1 | 1 | |
| 16-1 | 09401-08403 | CLIP, fuel hose | 6 | 6 | to 09401-09402 |
| 16-2 | 09401-09402 | CLIP, fuel hose | - | 6 | |

FIG. 56

G - 10

FIG. 56 WATER PUMP

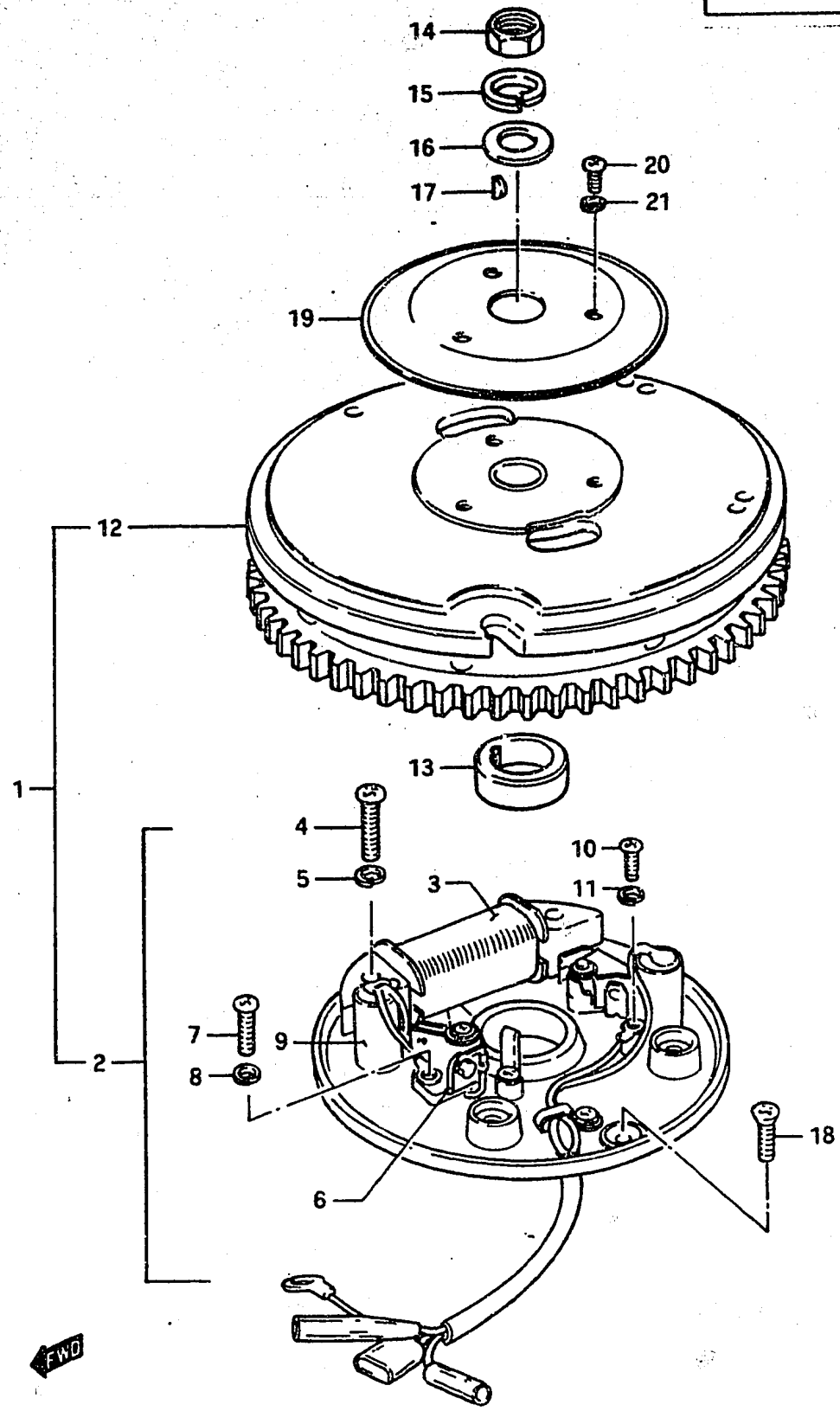


| Ref. No. | Part No. | Description | Q'ty | | Remarks |
|----------|-------------|--|------|---|-------------------------------|
| | | | D | F | |
| 1-1 | 17411-98500 | CASE, water pump | 1 | - | to 17411-98501 |
| 1-2 | 17411-98501 | CASE, water pump to (17411-98502)+(09289-10002) | 1 | - | DT5D-15499~ |
| 1-3 | 17411-98502 | CASE, water pump | - | 1 | to 17411-98503 |
| 2-1 | 09289-10003 | OIL SEAL, pump case | 1 | - | |
| 2-2 | 09289-10002 | OIL SEAL, pump case | - | 1 | |
| 3 | 09202-04008 | DOWEL PIN | 2 | 2 | |
| 4 | 09100-06022 | BOLT (6x35) | 4 | 4 | |
| 5 | 09162-06001 | LOCK WASHER | 4 | 4 | |
| 6-1 | 17461-98400 | IMPELLER, water pump | 1 | - | to 17461-98401 |
| 6-2 | 17461-98401 | IMPELLER, water pump | 1 | 1 | DT5D-18161~ to 17461-98402 |
| 7 | 09202-02006 | PIN, pump impeller | 1 | - | |
| 8 | 09420-03002 | KEY, pump impeller | 1 | 1 | |
| 9-1 | 17561-98510 | TUBE, water | 1 | 1 | S type |
| 9-2 | 17561-98520 | TUBE, water | 1 | 1 | L type |
| 10 | 17415-98500 | BUSHING, water pump | 1 | 1 | |
| 11 | 17563-98500 | GROMMET, water tube | 1 | 1 | |
| 12 | 17471-98500 | PLATE, pump case lower | 1 | 1 | to 17471-98501 |
| 13 | 17472-98500 | GASKET, pump plate | 1 | 1 | to 17472-98501 |
| 14-1 | 56131-98500 | HOUSING, driveshaft bearing | 1 | 1 | to 56131-98501 |
| 14-2 | 56131-98501 | HOUSING, driveshaft bearing | - | 1 | |
| 15 | 56132-98500 | GASKET, bearing housing | 1 | 1 | |
| 16 | 09100-06047 | BOLT (6x45) | 1 | 1 | |
| 17 | 09162-06001 | LOCK WASHER | 1 | 1 | |
| 18 | 08331-41309 | CIRCLIP, bearing housing | 1 | 1 | |
| 19 | 09289-10003 | OIL SEAL, driveshaft lower | 1 | 1 | |
| 20 | 09387-28002 | CIRCLIP, pump case | 1 | - | ~DT5D-15498 |

FIG. 57

G - 11

FIG. 57 MAGNETO



| Ref. No. | Part No. | Description | Q'ty | | Remarks |
|----------|-------------|-----------------------|------|---|------------------|
| | | | D | F | |
| 1 | 32100-98520 | MAGNETO ASSY | 1 | 1 | |
| 2 | 32101-98520 | •STATOR ASSY | 1 | 1 | |
| 3 | 32140-98520 | ••COIL ASSY, ignition | 1 | 1 | |
| 4 | 02112-06258 | ••SCREW | 2 | 2 | |
| 5 | 08321-21068 | ••LOCK WASHER | 2 | 2 | |
| 6 | 32240-98520 | ••POINT ASSY, contact | 2 | 2 | |
| 7 | 02112-05168 | ••SCREW | 2 | 2 | |
| 8 | 08321-21058 | ••LOCK WASHER | 2 | 2 | |
| 9 | 32341-98520 | ••CONDENSER | 2 | 2 | |
| 10 | 02112-04108 | ••SCREW | 2 | 2 | |
| 11 | 08321-21048 | ••LOCK WASHER | 2 | 2 | |
| 12 | 32102-98520 | •ROTOR | 1 | 1 | |
| 13-1 | 32490-98520 | •CAM, contact | 1 | 1 | |
| 13-2 | 32490-98521 | •CAM, contact | - | 1 | from 32490-98520 |
| 14 | 08310-22128 | NUT | 1 | 1 | |
| 15 | 08321-21128 | LOCK WASHER | 1 | 1 | |
| 16 | 08322-11128 | WASHER | 1 | 1 | |
| 17 | 08341-31039 | KEY | 1 | 1 | |
| 18 | 02122-05128 | SCREW | 2 | 2 | |
| 19 | 32725-98500 | INSULATOR, magneto | 1 | 1 | |
| 20 | 02112-06088 | SCREW | 3 | 3 | |
| 21 | 08321-21068 | LOCK WASHER | 3 | 3 | |

FIG. 58

G - 12

10

FIG. 58 STARTER

| Ref. No. | Part No. | Description | Q'ty | | Remarks |
|----------|-----------------|---|------|---|----------------------|
| | | | D | F | |
| 1-1 | 18100-98500-01J | STARTER ASSY, recoil | 1 | 1 | to 18100-98501-01J |
| 1-2 | 18100-98501-01J | STARTER ASSY, recoil | - | 1 | |
| 2 | 18121-98500 | •REEL, starter | 1 | 1 | DT5D-18161~ |
| 3 | 18142-98500 | •SPRING, recoil | 1 | 1 | |
| 4 | 18111-98500-01J | •HOUSING, starter | 1 | 1 | |
| 5 | 18522-98500 | •BUSHING, starter | 2 | 2 | |
| 6 | 18524-98500 | •CIRCLIP, starter | 2 | 2 | |
| 7-1 | 18541-98500 | •SPRING, friction to (18541-98501)+(18531-98501) | 1 | - | |
| 7-2 | 18541-98501 | •SPRING, friction | 1 | 1 | DT5D-18161~ |
| 8-1 | 18531-98500 | •PINION, starter to (18531-98501)+(18541-98501) | 1 | - | |
| 8-2 | 18531-98501 | •PINION, starter | 1 | 1 | |
| 9 | 18525-98500 | •PIN, starter | 1 | 1 | |
| 10 | 18170-98500 | •GRIP ASSY, starter | 1 | 1 | |
| 11 | 18210-98500 | •GRIP | 1 | 1 | |
| 12-1 | 18181-98500-01J | GUIDE, rope | 1 | 1 | |
| 12-2 | 18181-98501-01J | GUIDE, rope | - | 1 | from 18181-98500-01J |
| 13 | 02112-04168 | SCREW | 2 | 2 | |
| 14 | 08321-21048 | LOCK WASHER | 2 | 2 | |
| 15 | 01107-06208 | BOLT | 4 | 4 | |
| 16 | 08321-21068 | LOCK WASHER | 4 | 4 | |

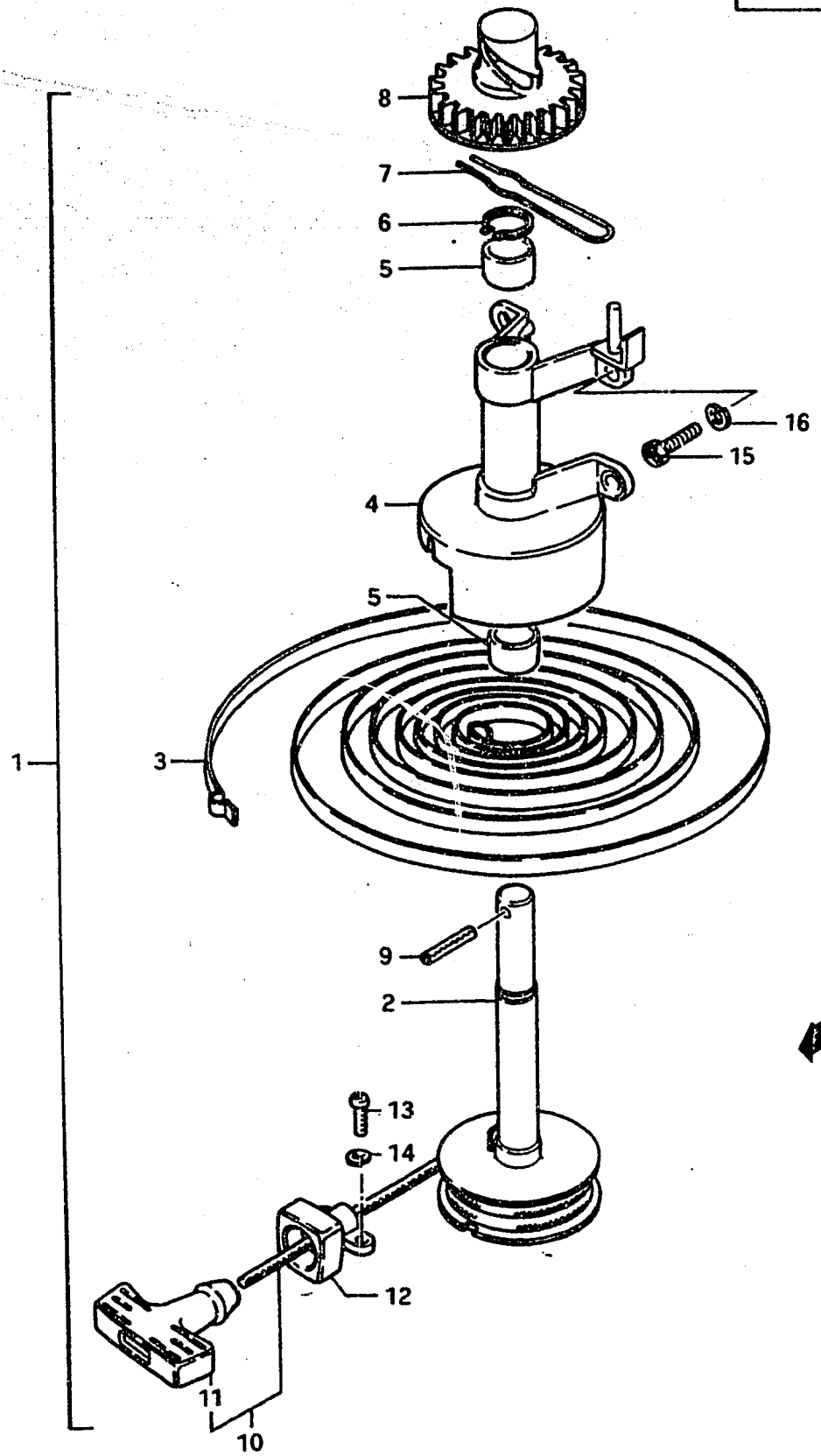
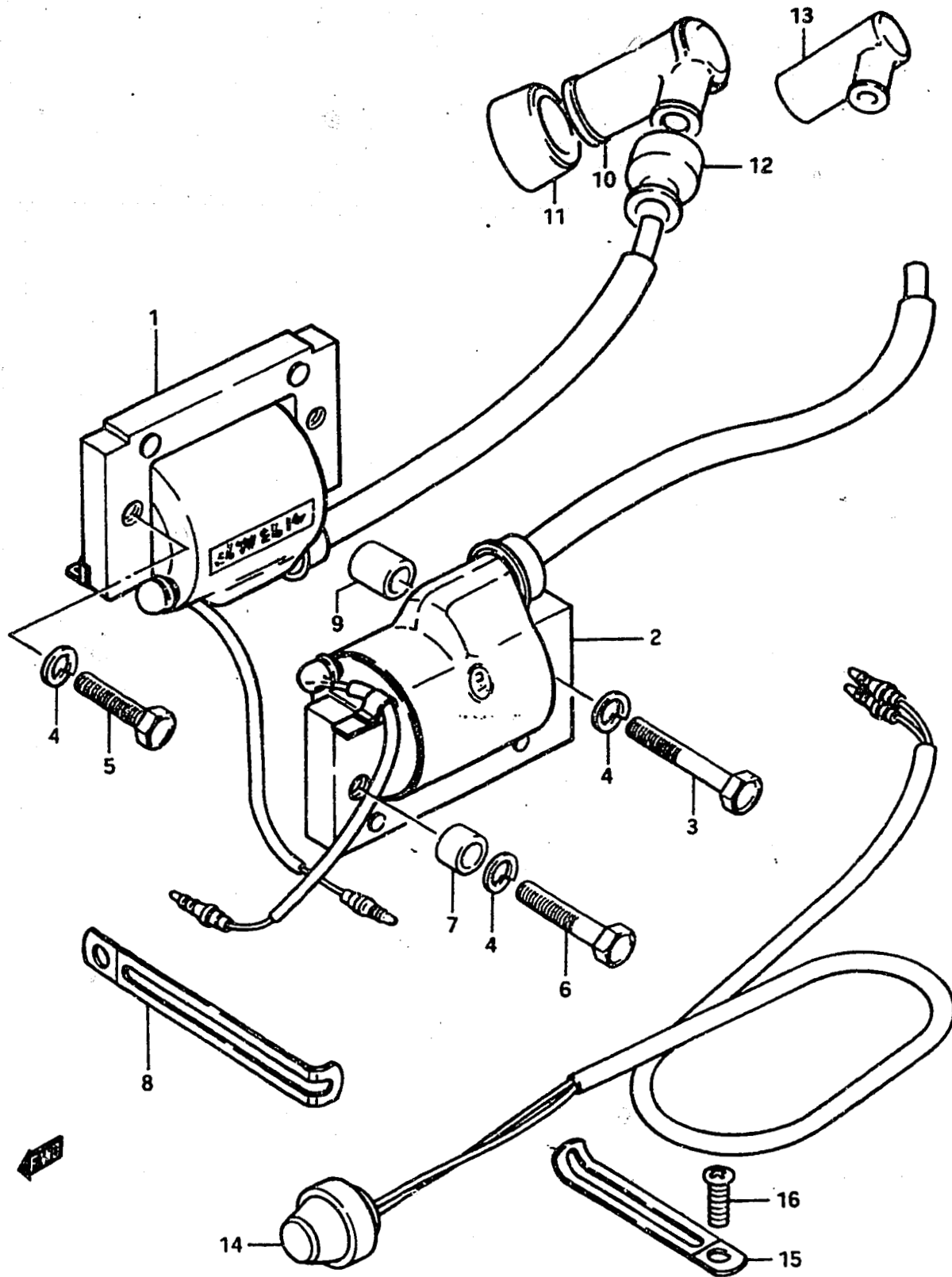


FIG.59

G - 13 11

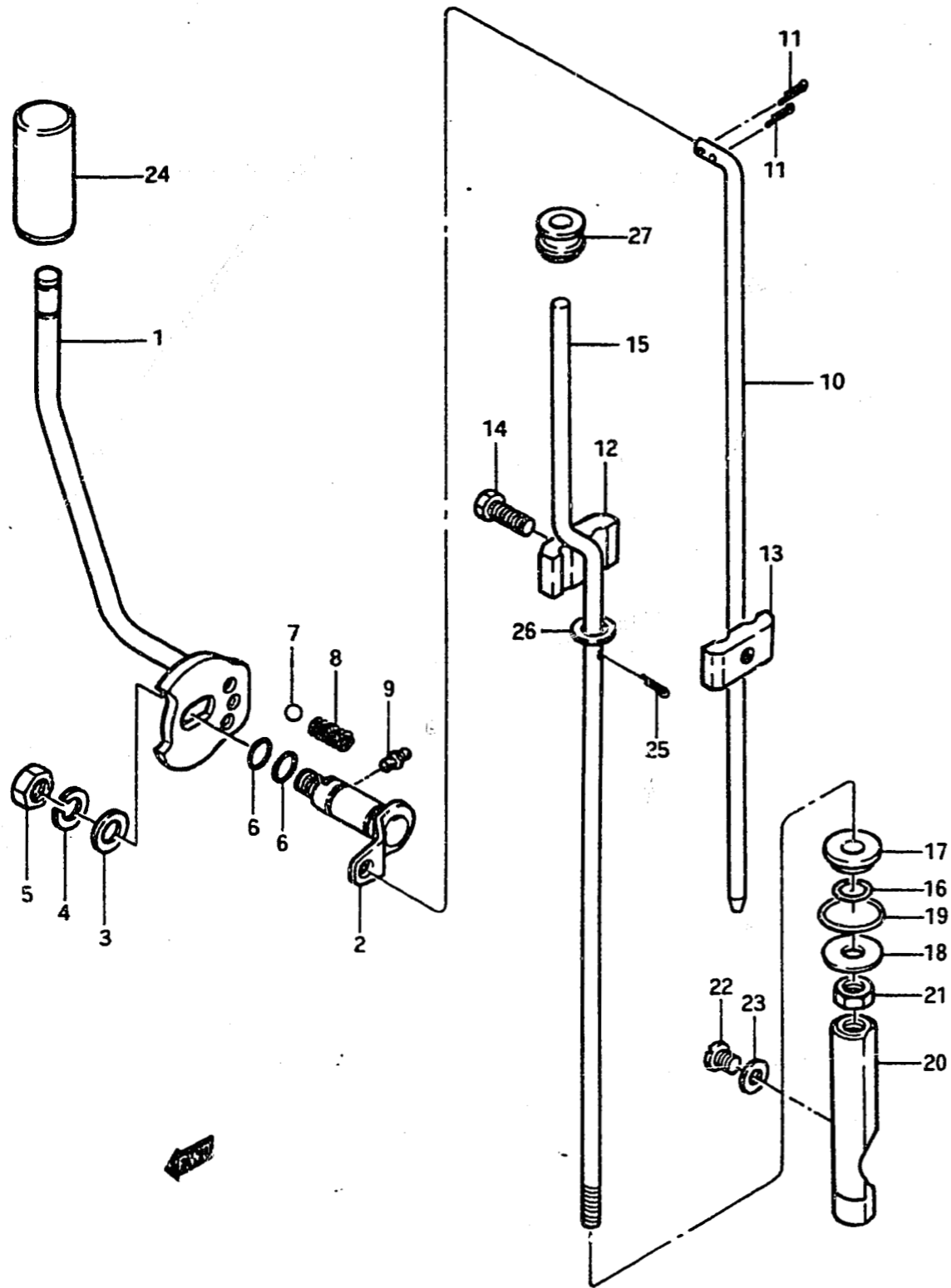
FIG.59 ELECTRICAL



| Ref. No. | Part No. | Description | Qty | | Remarks |
|----------|-------------|---------------------------|-----|---|------------------|
| | | | D | F | |
| 1-1 | 33411-98520 | COIL ASSY, ignition upper | 1 | - | |
| 1-2 | 33410-98520 | COIL ASSY, ignition upper | - | 1 | |
| 1-3 | 33410-98521 | COIL ASSY, ignition upper | - | 1 | from 33410-98520 |
| 2-1 | 33412-98520 | COIL ASSY, ignition lower | 1 | - | |
| 2-2 | 33420-98520 | COIL ASSY, ignition lower | - | 1 | |
| 2-3 | 33420-98521 | COIL ASSY, ignition lower | - | 1 | from 33420-98520 |
| 3-1 | 01107-06358 | BOLT | 2 | - | |
| 3-2 | 01107-06458 | BOLT, ignition coil RH | - | 2 | |
| 4 | 08321-21068 | LOCK WASHER | 4 | 4 | |
| 5 | 01107-06208 | BOLT | 1 | - | |
| 6 | 01107-06303 | BOLT | 1 | 2 | |
| 7 | 09180-06030 | SPACER (6.8x10x10) | 1 | - | |
| 8 | 09404-06415 | CLAMP | 1 | 1 | |
| 9 | 09180-06061 | SPACER | 2 | 2 | |
| 10 | 33510-22010 | CAP, spark plug | 2 | 2 | |
| 11 | 33541-98002 | SEAL, spark plug | 2 | 2 | |
| 12 | 33542-98000 | SEAL, high tension cord | 2 | 2 | |
| 13 | 33510-95510 | CAP, spark plug | 1 | 1 | E13 |
| 14-1 | 37870-93113 | SWITCH ASSY, engine stop | 1 | 1 | |
| 14-2 | 37800-93150 | SWITCH ASSY, engine stop | - | 1 | from 37870-93113 |
| 15 | 09404-06401 | CLAMP | 1 | 1 | |
| 16 | 02112-06108 | SCREW | 1 | 1 | |

FIG.60

G - 14



12

FIG.60 CLUTCH LEVER

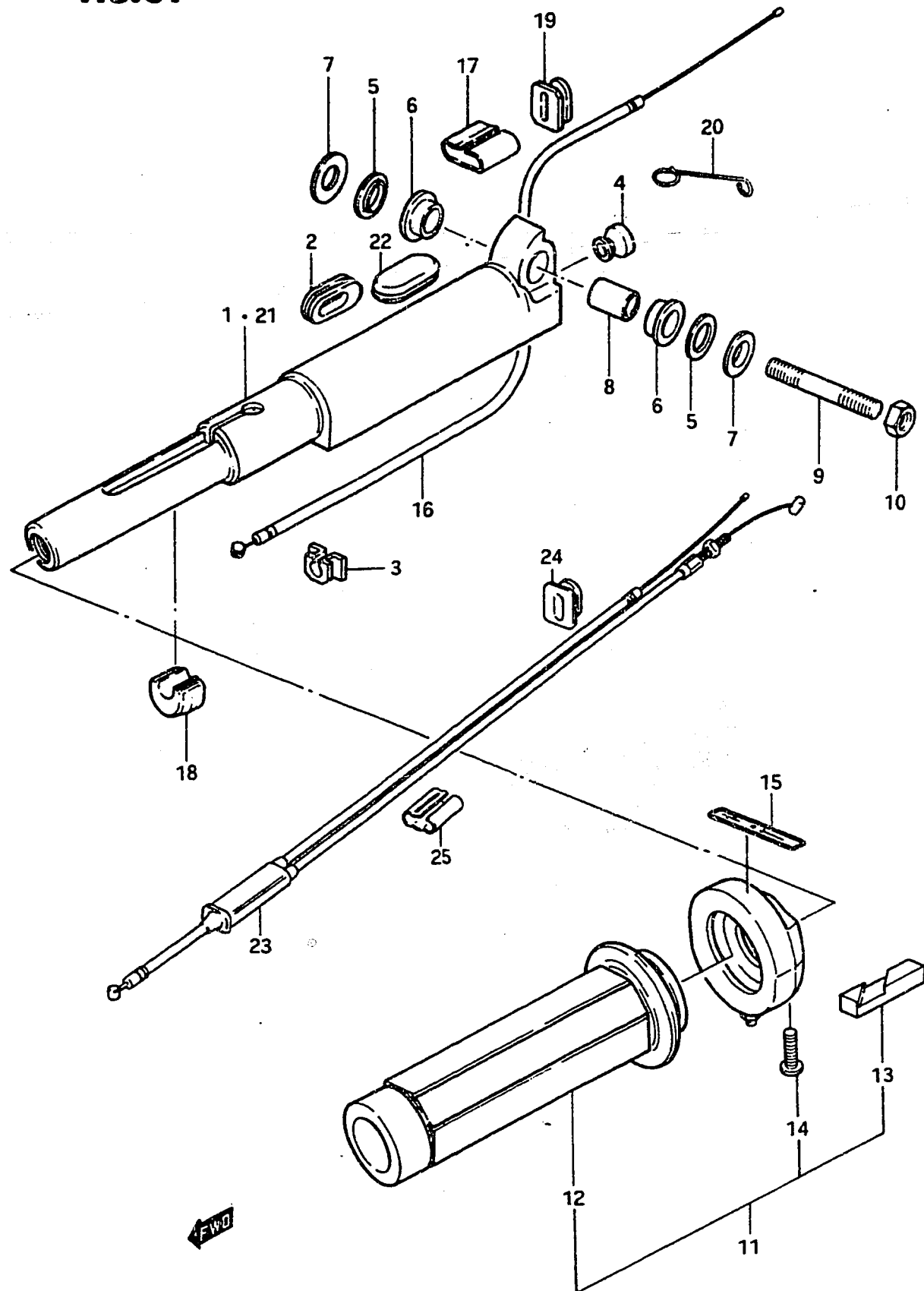
| Ref. No. | Part No. | Description | Q'ty | | Remarks |
|----------|-------------|----------------------------|------|---|----------------|
| | | | D | F | |
| 1-1 | 21110-98500 | LEVER, clutch | 1 | 1 | to 21110-98502 |
| 1-2 | 21110-98502 | LEVER, clutch | - | 1 | |
| 2-1 | 21210-98500 | SHAFT, clutch lever | 1 | 1 | to 21210-98501 |
| 2-2 | 21210-98501 | SHAFT, clutch lever | - | 1 | to 21210-98502 |
| 3 | 09160-08015 | WASHER (8.5x16x1.6) | 1 | 1 | |
| 4 | 09162-08003 | LOCK WASHER | 1 | 1 | |
| 5 | 09140-08003 | NUT | 1 | 1 | |
| 6 | 09280-09003 | O RING, clutch lever shaft | 2 | 2 | |
| 7 | 09260-10003 | BALL, clutch notch | 1 | 1 | |
| 8 | 09440-07021 | SPRING, clutch notch | 1 | 1 | |
| 9 | 22511-99000 | GREASE NIPPLE | 1 | 1 | |
| 10-1 | 23111-98510 | ROD, clutch | 1 | 1 | S type |
| 10-2 | 23111-98520 | ROD, clutch | 1 | 1 | L type |
| 11 | 09204-01001 | COTTER PIN | 2 | 2 | |
| 12 | 23311-99001 | CONNECTOR (1) | 1 | 1 | |
| 13 | 23321-99001 | CONNECTOR (2) | 1 | 1 | |
| 14-1 | 09100-06020 | BOLT | 1 | - | |
| 14-2 | 09128-06014 | BOLT | - | 1 | |
| 15-1 | 25111-98510 | ROD, shifting | 1 | 1 | S type |
| 15-2 | 25111-98520 | ROD, shifting | 1 | 1 | L type |
| 16 | 09280-06004 | O RING, shifting rod | 1 | 1 | |
| 17 | 25211-98500 | GUIDE, shifting rod | 1 | 1 | |
| 18 | 08212-06201 | WASHER, shifting rod guide | 1 | 1 | |
| 19-1 | 09280-16004 | O RING, shifting rod guide | 1 | 1 | to 09280-16005 |
| 19-2 | 09280-16005 | O RING, shifting rod guide | - | 1 | |
| 20 | 25311-93100 | CAM, shifting | 1 | 1 | |
| 21 | 08310-11068 | NUT | 1 | 1 | |
| 22 | 09139-06003 | SCREW, shifting cam stop | 1 | 1 | |
| 23 | 09168-06002 | GASKET | 1 | 1 | |
| 24 | 21141-98500 | KNOB, clutch lever | 1 | 1 | |
| 25 | 09204-01001 | COTTER PIN | 1 | 1 | |
| 26 | 09160-06015 | WASHER (6.5x13x1) | 1 | 1 | |
| 27-1 | 09305-06006 | BUSHING, shifting rod | 1 | 1 | to 09305-06008 |
| 27-2 | 09305-06008 | BUSHING, shifting rod | - | 1 | |

FIG.61

G - 15

13

FIG.61 HANDLE - GRIP

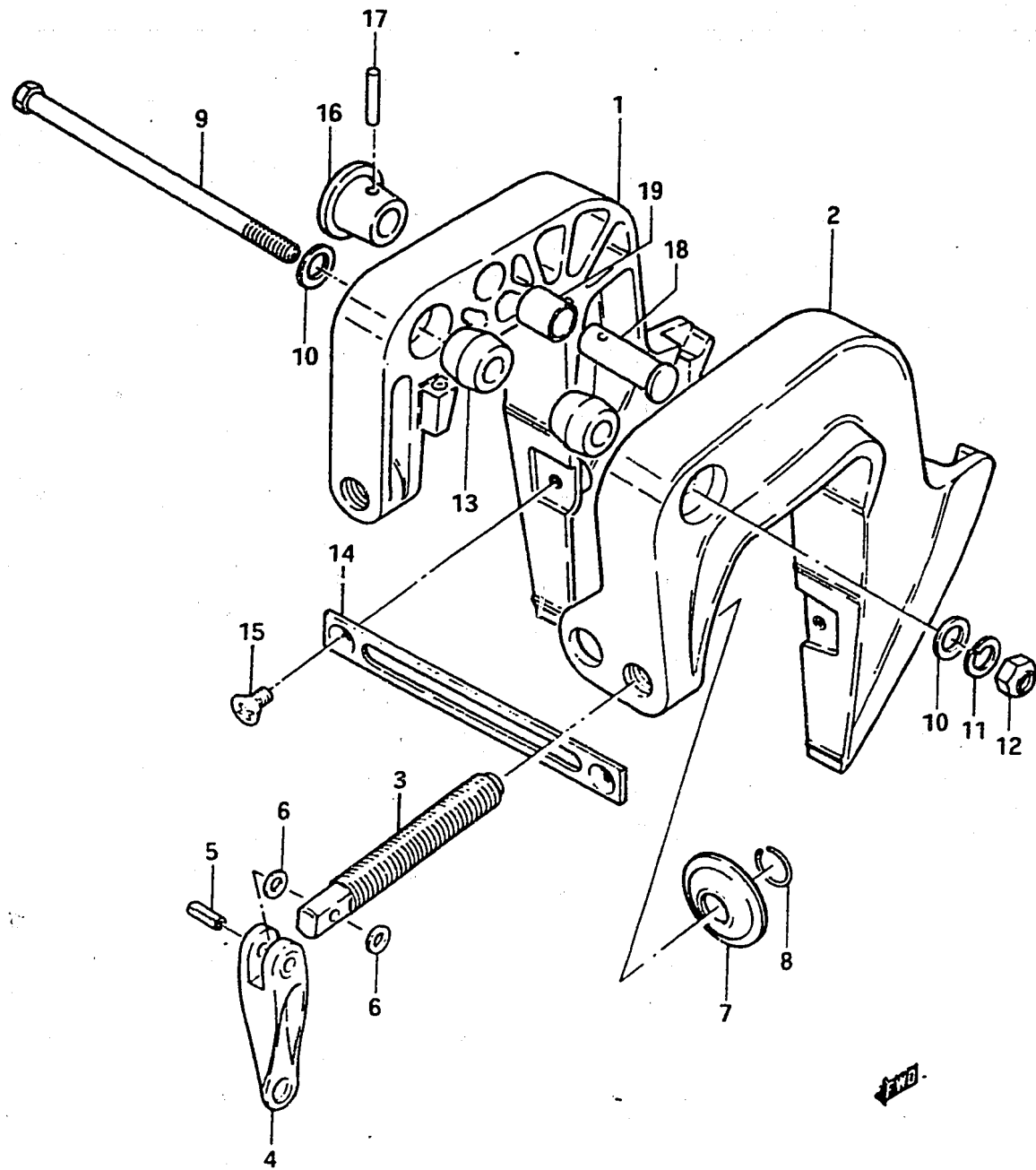


| Ref. No. | Part No. | Description | Q'ty | | Remarks |
|----------|-----------------|---------------------------|------|---|----------------|
| | | | D | F | |
| 1 | 63111-98500-01J | HANDLE, tiller | 1 | 1 | |
| 2 | 63113-96000 | GROMMET, cable support | 1 | 1 | |
| 3 | 63112-93103 | GROMMET, stop switch cord | 1 | 1 | |
| 4 | 09321-07001 | CUSHION, handle | 1 | 1 | |
| 5 | 63321-99000 | SEAT, handle rubber | 2 | 2 | |
| 6 | 09305-12007 | BUSHING, handle cushion | 2 | 2 | |
| 7 | 09160-10041 | WASHER, handle pivot | 2 | 2 | |
| 8 | 09303-10001 | SPACER, handle pivot | 1 | 1 | |
| 9 | 09108-10026 | STUD BOLT, handle pivot | 1 | 1 | |
| 10 | 09140-10017 | NUT, handle | 1 | 1 | |
| 11-1 | 63200-93101 | GRIP ASSY, throttle | 1 | 1 | to 63200-93102 |
| 11-2 | 63200-93102 | GRIP ASSY, throttle | - | 1 | to 63200-93103 |
| 11-3 | 63200-93103 | GRIP ASSY, throttle | - | 1 | |
| 12-1 | 63210-93101 | GRIP, throttle | 1 | 1 | to 63210-93102 |
| 12-2 | 63210-93102 | GRIP, throttle | - | 1 | |
| 13 | 63214-93100 | PIECE, sliding | 1 | 1 | |
| 14 | 63218-93100 | SCREW, cover | 2 | 2 | |
| 15 | 63215-93101 | MARK, handle grip | 1 | 1 | |
| 16 | 63610-96200 | CABLE ASSY, throttle | 1 | 1 | |
| 17 | 09408-00001 | CLIP, cable & switch cord | 1 | 1 | |
| 18-1 | 63331-93100 | FRICTION, handle | 1 | 1 | to 63331-93101 |
| 18-2 | 63331-93101 | FRICTION, handle | - | 1 | |
| 19 | 09309-06004 | GROMMET, cable (2) | 1 | 1 | |
| 20-1 | 63632-98510 | HOLDER, throttle cable | 1 | 1 | to 63632-98511 |
| 20-2 | 63632-98511 | HOLDER, throttle cable | - | 1 | |
| 21 | 63111-96100-01J | HANDLE, tiller | 1 | 1 | E13 |
| 22 | 09250-08006 | CAP, tiller handle | 1 | 1 | |
| 23 | 63610-98500 | CABLE ASSY, throttle | 1 | 1 | |
| 24 | 61185-98501 | GROMMET, cable | 1 | 1 | E3 |
| 25 | 63631-98500 | CLIP, cable/switch cord | 1 | 1 | |

FIG.62

H - 2

FIG.62 CLAMP BRACKET



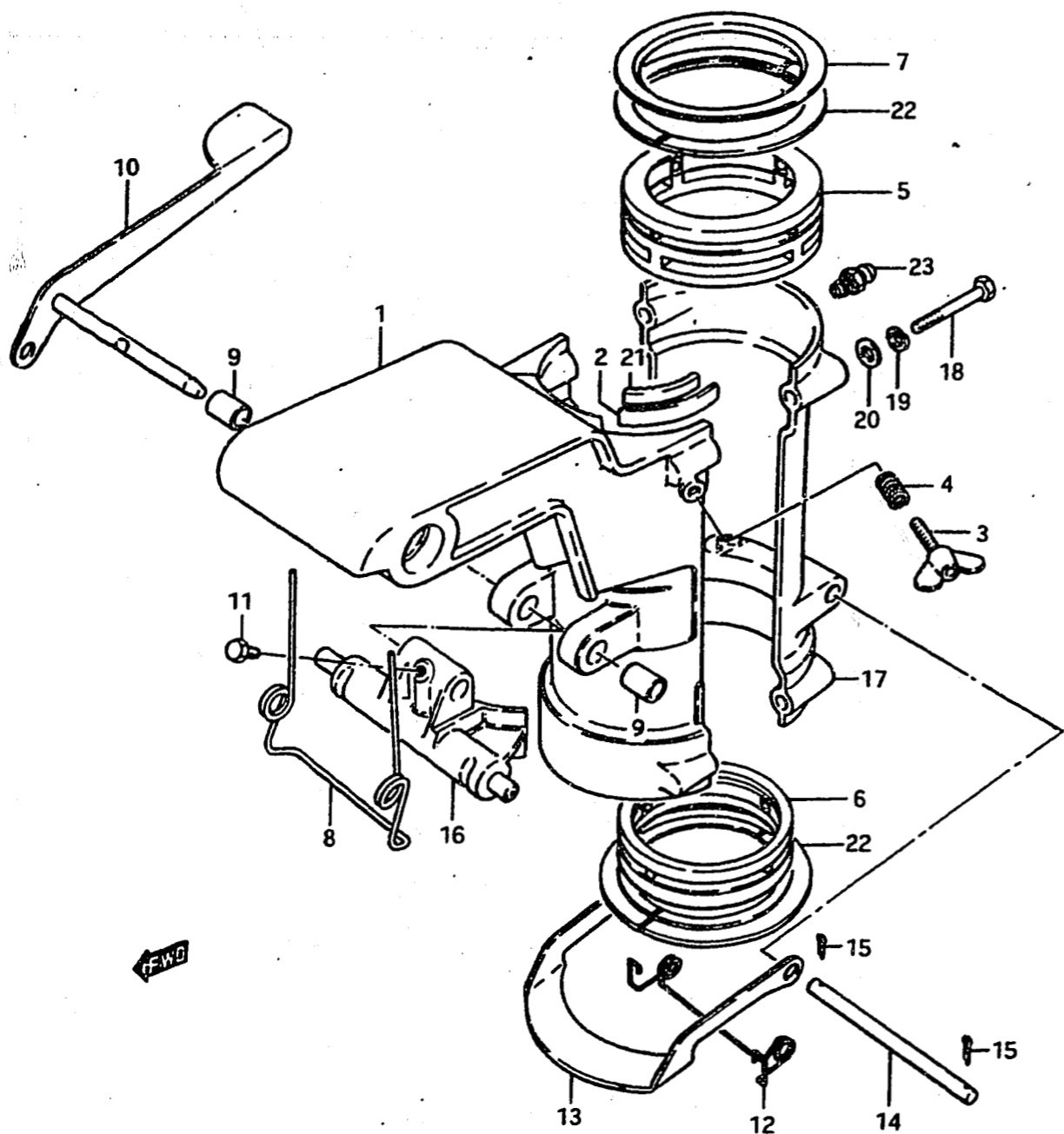
| Ref. No. | Part No. | Description | Q'ty | | Remarks |
|----------|-----------------|----------------------------|---------|---|-----------------------------------|
| | | | D | F | |
| 1-1 | 41111-98500-01J | BRACKET, clamp RH | 1 | - | to 41111-98501-01J |
| 1-2 | 41111-98501-01J | BRACKET, clamp RH | 1 | 1 | to 41111-98502-01J DT5D-15115~ |
| 1-3 | 41111-98502-01J | BRACKET, clamp RH | - | 1 | to 41111-98503-01J |
| 2-1 | 41121-98500-01J | BRACKET, clamp RH | 1 | 1 | to 41121-98501-01J |
| 2-2 | 41121-98501-01J | BRACKET, clamp LH | - | 1 | to 41121-98502-01J |
| 3 | 41211-99001 | SCREW, clamp | 2 | 2 | |
| 4 | 41212-99000-01J | HANDLE, clamp | 2 | 2 | |
| 5 | 09205-05001 | PIN, clamp handle | 2 | 2 | |
| 6 | 09181-05001 | SHIM (5.2x13x0.1) | AR(0~4) | | |
| 7 | 41213-99001 | PLATE, clamp | 2 | 2 | |
| 8 | 09380-07001 | RING, clamp plate | 2 | 2 | |
| 9 | 09100-08144 | BOLT, swivel shaft (8x145) | 1 | 1 | |
| 10 | 09160-08015 | WASHER (8.5x16x1.6) | 2 | 2 | |
| 11 | 09162-08003 | LOCK WASHER | - | 1 | |
| 12 | 09159-08026 | NUT | 1 | 1 | |
| 13 | 43321-96000 | BUSHING, tilt friction | 2 | 2 | |
| 14 | 41311-98500 | PLATE, clamp bracket | 1 | 1 | |
| 15 | 09125-06020 | SCREW, clamp bracket | 2 | 2 | |
| 16 | 41221-93001 | KNOB, tilt stopper | - | 1 | } DT5D-15115~ |
| 17 | 09205-03015 | PIN, tilt stopper knob | - | 1 | |
| 18 | 09200-12001 | PIN, tilt stopper | - | 1 | |
| 19 | 09300-12009 | BUSHING, tilt stopper pin | - | 1 | |

FIG.63

H - 3

15

FIG.63 SWIVEL BRACKET

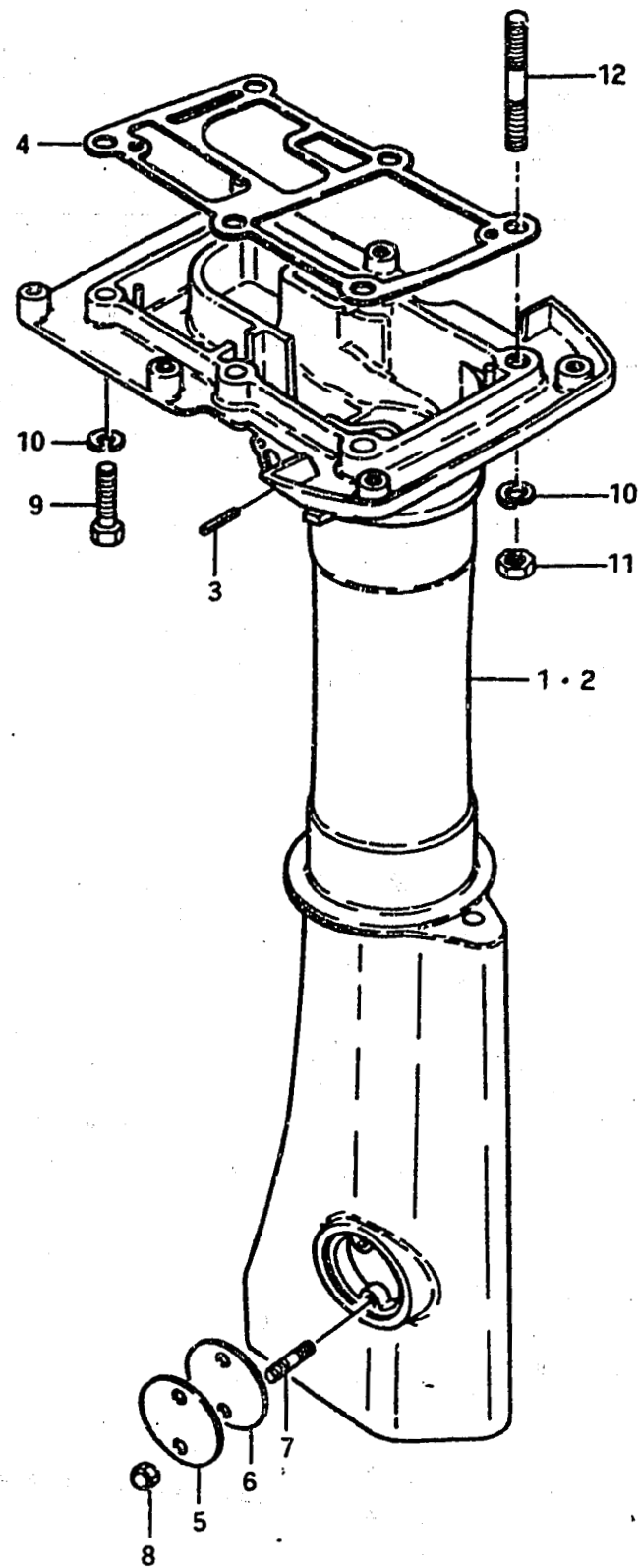


| Ref. No. | Part No. | Description | Q'ty | | Remarks |
|----------|-----------------|-----------------------------|------|---|---|
| | | | D | F | |
| 1-1 | 43111-98500-01J | BRACKET, swivel | 1 | - | to 43111-98501-01J |
| 1-2 | 43111-98501-01J | BRACKET, swivel | 1 | 1 | to 43111-98502-01J DT5D-15115~ |
| 1-3 | 43111-98502-01J | BRACKET, swivel | - | 1 | to (43111-98101-01J)+(43121-98100-01J)+(43410-98101)+(43711-98100) |
| 2 | 43411-98500 | ADJUSTER, steering | 1 | 1 | |
| 3 | 09119-06040 | BOLT, steering adjuster | 1 | 1 | |
| 4-1 | 09440-09009 | SPRING, steering adjuster | 1 | 1 | L:13 |
| 4-2 | 09440-09012 | SPRING, steering adjuster | - | 1 | L:15 |
| 5-1 | 43711-98502 | BUSHING, steering upper | 1 | - | to (43711-98503)+(43713-98500) |
| 5-2 | 43711-98503 | BUSHING, steering upper | - | 1 | |
| 6-1 | 43721-98501 | BUSHING, steering lower | 1 | - | to (43721-98502)+(43713-98500) |
| 6-2 | 43721-98502 | BUSHING, steering lower | - | 1 | to 43721-98503 |
| 6-3 | 43721-98503 | BUSHING, steering lower | - | 1 | |
| 7 | 43712-98500 | PLATE, steering upper | 1 | 1 | |
| 8-1 | 45211-98500 | SPRING, rack lever | 1 | 1 | to 45211-98502 |
| 8-2 | 45211-98502 | SPRING, rack lever | - | 1 | |
| 9 | 09300-08005 | BUSHING, rack lever | 2 | 2 | |
| 10-1 | 45110-98500 | LEVER, rack | 1 | 1 | to 45110-98501 |
| 10-2 | 45110-98501 | LEVER, rack | - | 1 | |
| 11 | 09139-05003 | SCREW, rack lever | 1 | 1 | |
| 12 | 45212-98500 | SPRING, reverse lock arm | 1 | 1 | |
| 13-1 | 45231-98500 | ARM, reverse lock | 1 | 1 | |
| 13-2 | 45231-98501 | ARM, reverse lock | - | 1 | from 45231-98500 |
| 14 | 09200-08026 | PIN, reverse lock arm | 1 | 1 | |
| 15 | 09204-01001 | COTTER PIN | 2 | 2 | |
| 16-1 | 45411-98500-01J | BLOCK, thrust | 1 | 1 | to 45411-98501-01J |
| 16-2 | 45411-98501-01J | BLOCK, thrust | - | 1 | |
| 17-1 | 43121-98500-01J | COVER, swivel bracket | 1 | - | to 43121-98501-01J |
| 17-2 | 43121-98501-01J | COVER, swivel bracket | 1 | 1 | DT5D-13039~ to (43121-98100-01J)+(43111-98101-01J)+(43410-98101)+(43711-98100) |
| 18 | 09100-06035 | BOLT, swivel bracket (6x40) | 4 | 4 | |
| 19 | 09162-06001 | LOCK WASHER | 4 | 4 | |
| 20 | 09160-06015 | WASHER (6.5x13x1) | 4 | 4 | |
| 21 | 43416-98500 | BLOCK, steering adjuster | 1 | 1 | |
| 22 | 43713-98500 | PIECE, steering bushing | - | 4 | |
| 23 | 22511-99000 | GREASE NIPPLE | - | 2 | |

FIG.64

H - 4

FIG.64 DRIVESHAFT HOUSING

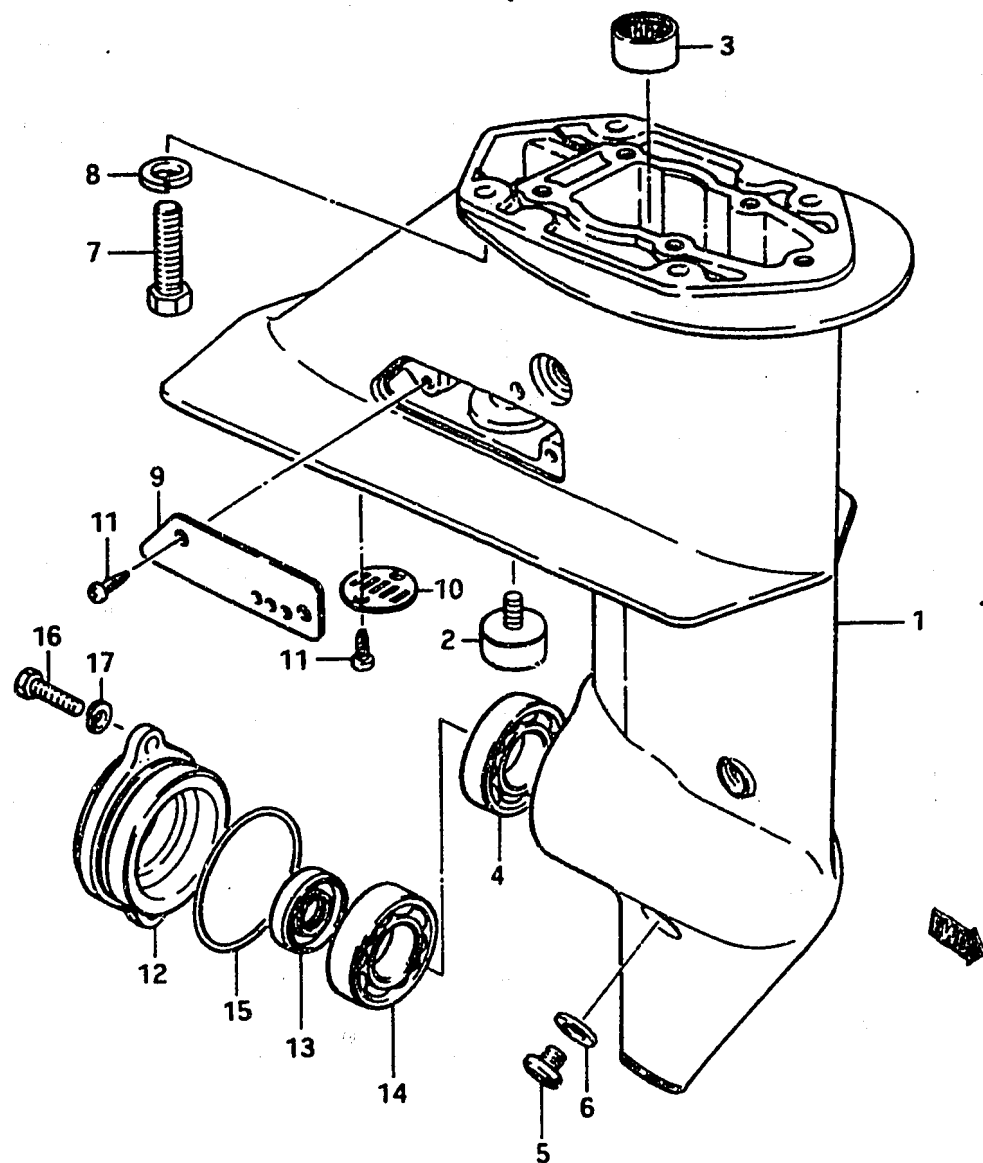


| Ref. No. | Part No. | Description | Q'ty | | Remarks |
|----------|-----------------|------------------------------|------|---|--|
| | | | D | F | |
| 1-1 | 52110-98510-01J | HOUSING, drive shaft | 1 | 1 | S type to 52110-98511-01J |
| 1-2 | 52110-98511-01J | HOUSING, drive shaft | - | 1 | |
| 2-1 | 52110-98520-01J | HOUSING, drive shaft | 1 | 1 | L type to 52110-98521-01J to 52110-98522-01J |
| 2-2 | 52110-98521-01J | HOUSING, drive shaft | - | 1 | |
| 2-3 | 52110-98522-01J | HOUSING, drive shaft | - | 1 | |
| 3 | 09205-05001 | DOWEL PIN, clutch lever | 1 | 1 | |
| 4 | 52113-98500 | GASKET, drive shaft housing | 1 | 1 | |
| 5 | 52115-98500-01J | COVER, clutch adjusting hole | 1 | 1 | |
| 6 | 52116-98500 | GASKET, adjusting hole | 1 | 1 | |
| 7 | 09108-05002 | STUD BOLT | 2 | 2 | |
| 8 | 09145-05001 | NUT | 2 | 2 | |
| 9 | 09100-08112 | BOLT (8x30) | 6 | 4 | |
| 10 | 09162-08003 | LOCK WASHER | 6 | 6 | |
| 11 | 09140-08003 | NUT | - | 2 | |
| 12 | 09108-08036 | STUD BOLT | - | 2 | |

FIG. 65

H - 5

FIG. 65 GEAR CASE

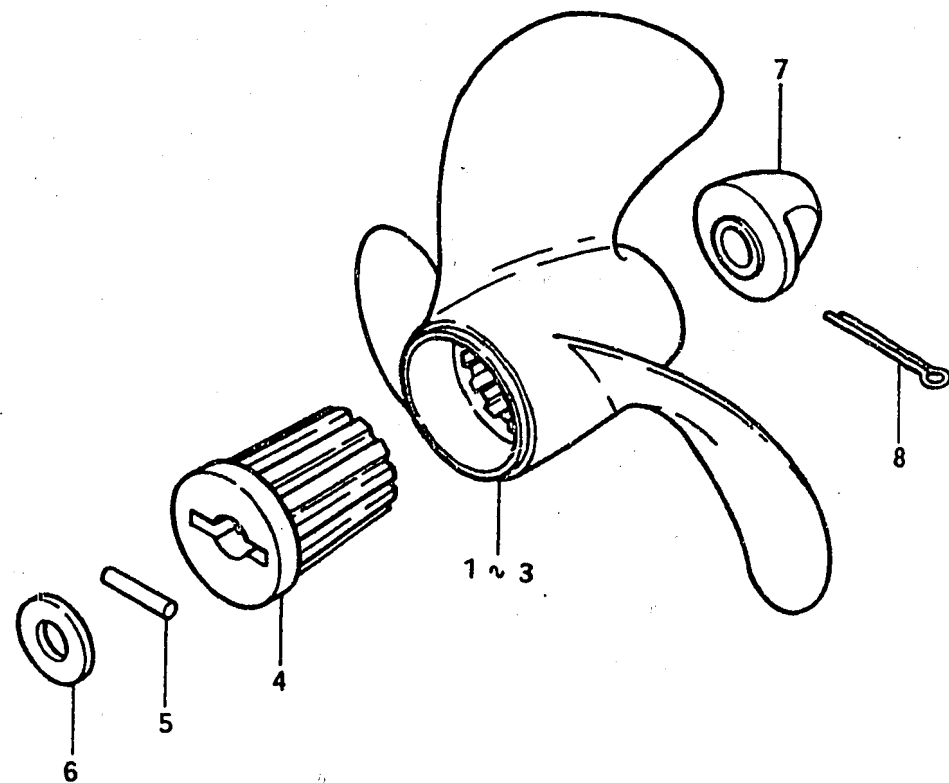


| Ref. No. | Part No. | Description | Q'ty | | Remarks |
|----------|-----------------|---|------|---|--------------------|
| | | | D | F | |
| 1-1 | 55100-98820-01J | CASE ASSY, gear | 1 | 1 | to 55100-98821-01J |
| 1-2 | 55100-98821-01J | CASE ASSY, gear | - | 1 | to 55100-98822-01J |
| 1-3 | 55100-98822-01J | CASE ASSY, gear to (55110-98502-01J)+(55321-93141) | - | 1 | |
| 2-1 | 55321-93140 | ·ZINC, protection | 1 | 1 | |
| 2-2 | 55321-93141 | ·ZINC, protection | - | 1 | from 55321-93140 |
| 3 | 09263-14010 | ·BEARING, pinion shaft | 1 | 1 | |
| 4 | 08113-60040 | ·BEARING, gear | 1 | 1 | |
| 5 | 09248-10003 | PLUG, drain | 3 | 3 | |
| 6 | 09168-10004 | GASKET, drain plug | 3 | 3 | to 09168-10022 |
| 7 | 09100-08112 | BOLT, gear case (8x30) | 4 | 4 | |
| 8 | 09162-08003 | LOCK WASHER, gear case | 4 | 4 | |
| 9 | 55112-98500-01J | COVER, gear case side | 1 | 1 | |
| 10 | 55114-98500 | COVER, gear case lower | 1 | 1 | |
| 11 | 03112-04109 | SCREW | 4 | 4 | |
| 12 | 56111-98500-01J | HOUSING, bearing | 1 | 1 | |
| 13 | 09289-12002 | OIL SEAL, bearing housing | 1 | 1 | |
| 14 | 08113-60040 | BEARING, gear | 1 | 1 | |
| 15 | 09280-48003 | O RING, bearing housing | 1 | 1 | |
| 16 | 09100-06020 | BOLT (6x20) | 2 | 2 | |
| 17 | 09162-06001 | LOCK WASHER | 2 | 2 | |

FIG.66

H - 6

FIG.66 PROPELLER



| Ref. No. | Part No. | Description | Q'ty | | Remarks |
|----------|-----------------|----------------------|------|---|-----------------------------------|
| | | | D | F | |
| 1 | 58111-98721-01T | PROPELLER (F500) | 1 | 1 | 3x200x130 |
| 2 | 58111-99721-01T | PROPELLER (F600) | 1 | 1 | 3x200x150 |
| 3-1 | 58111-98500-01T | PROPELLER (F610) STD | 1 | 1 | 3x200x170 from 58111-98500-01T |
| 3-2 | 58111-98501-01T | PROPELLER (F610) STD | - | 1 | |
| 4-1 | 58120-98500 | BUSHING, propeller | 1 | 1 | to 58120-98510 |
| 4-2 | 58120-98510 | BUSHING, propeller | - | 1 | DT5F-11580~ |
| 5 | 09202-04009 | SHEAR PIN | 1 | 1 | |
| 6 | 09161-12003 | WASHER, shear pin | 1 | 1 | |
| 7-1 | 58131-98500 | NUT, propeller | 1 | 1 | |
| 7-2 | 58130-98100 | NUT, propeller | - | 1 | from 58131-98500 |
| 8 | 09204-03001 | COTTER PIN | 1 | 1 | |

FIG. 67

H - 7

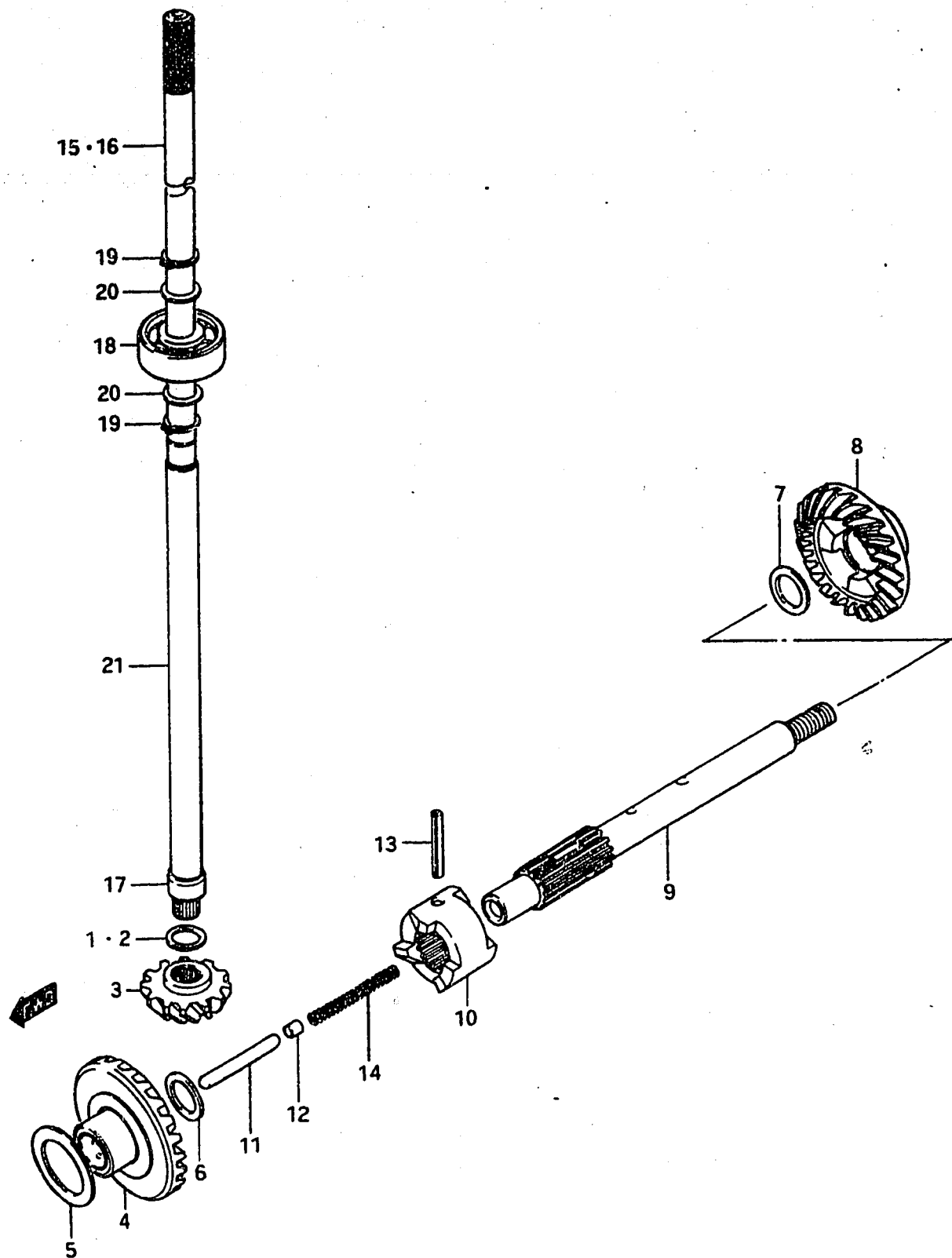


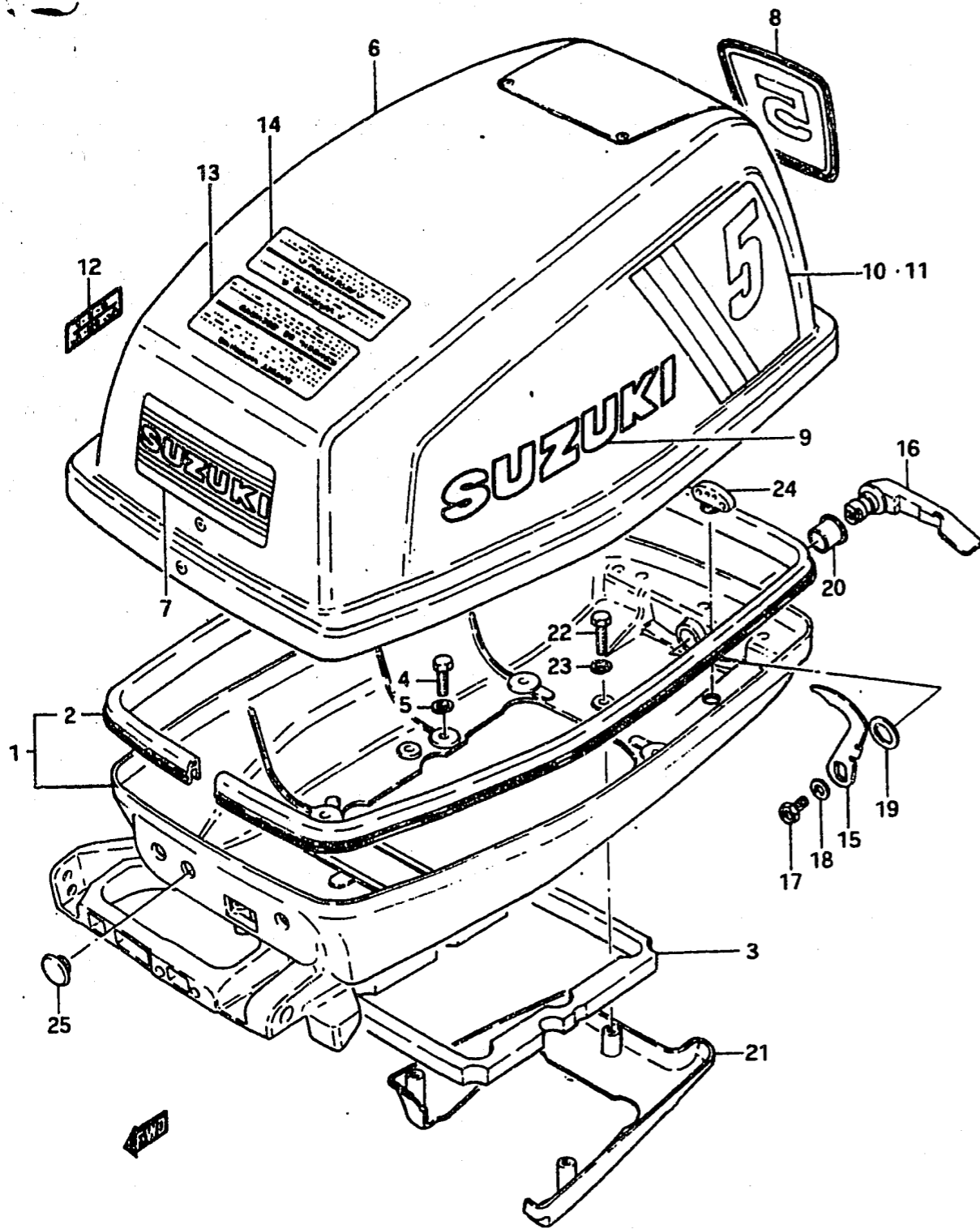
FIG. 67 TRANSMISSION

| Ref. No. | Part No. | Description | Q'ty | | Remarks |
|----------|---|-----------------------------|---------|-------|-------------------------------|
| | | | D | F | |
| 1 | 08211-10151 | THRUST WASHER | AR(0~1) | T:1.0 | |
| 2-1 | 08221-10143 | SHIM, pinion adjusting | AR(0~1) | T:0.1 | |
| 2-2 | 08221-10144 | SHIM, pinion adjusting | AR(0~2) | T:0.2 | |
| 2-3 | 08221-10145 | SHIM, pinion adjusting | AR(0~1) | T:0.5 | |
| 3 | 57311-98500 | PINION | 1 | 1 | |
| 4 | 57510-98500 | GEAR, forward | 1 | 1 | |
| 5 | 08211-12171 | THRUST WASHER, gear | AR(0~2) | T:1.0 | |
| 6 | 08221-12175 | SHIM, gear | AR(0~2) | T:0.5 | |
| 7-1 | 08221-20303 | SHIM, gear back | AR(0~2) | T:0.1 | |
| 7-2 | 08221-20304 | SHIM, gear back | AR(0~4) | T:0.2 | |
| 7-3 | 08221-20305 | SHIM, gear back | AR(0~2) | T:0.5 | |
| 8 | 57520-98500 | GEAR, reverse | 1 | 1 | |
| 9 | 57611-98500 | SHAFT, propeller | 1 | 1 | |
| 10 | 57621-98500 | SHIFTER, clutch dog | 1 | 1 | |
| 11 | 57631-98500 | ROD, push | 1 | 1 | |
| 12 | 57632-98500 | PIN, push | 1 | 1 | |
| 13 | 09209-04017 | PIN, clutch dog shifter | 1 | 1 | |
| 14 | 09440-05019 | SPRING, return | 1 | 1 | |
| 15-1 | 57110-98511 to (57110-98512)+(09420-03002)+(17461-98401) | SHAFT, drive | 1 | - | S type |
| 15-2 | 57110-98512 | SHAFT, drive | 1 | 1 | to 57110-98513 DT5D-18161~ |
| 15-3 | 57110-98513 | SHAFT, drive | - | 1 | |
| 16-1 | 57110-98521 to (57110-98522)+(09420-03002)+(17461-98401) | SHAFT, drive | 1 | - | L type |
| 16-2 | 57110-98522 | SHAFT, drive | 1 | 1 | to 57110-98523 DT5D-18161~ |
| 16-3 | 57110-98523 | SHAFT, drive | - | 1 | |
| 17 | 57117-98501 | •INNER RACE, pinion bearing | 1 | 1 | |
| 18 | 08113-62000 | •BEARING, driveshaft | 1 | 1 | |
| 19 | 08331-31109 | •CIRCLIP | 2 | 2 | |
| 20 | 08211-10161 | •THRUST WASHER | 2 | 2 | |
| 21 | 57116-98500 | •SPACER, drive shaft | 1 | 1 | |

FIG. 68

H - 8

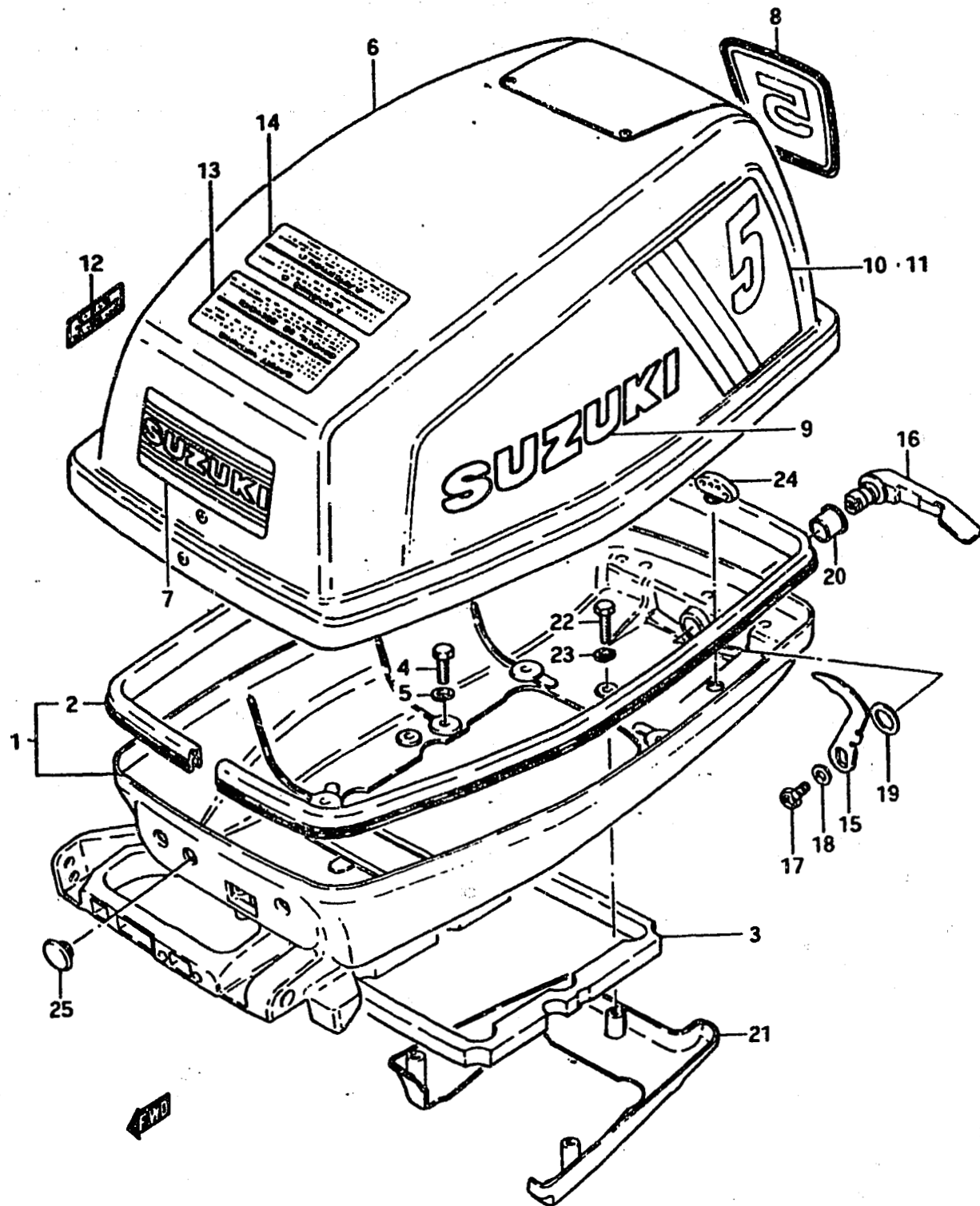
FIG. 68 ENGINE COVER



| Ref. No. | Part No. | Description | Q'ty | | Remarks |
|----------|-----------------|------------------------|------|---|----------------------|
| | | | D | F | |
| 1 | 61110-96005-01J | COVER, engine lower | 1 | 1 | |
| 2-1 | 61112-96003 | •RUBBER, engine lower | 1 | 1 | |
| 2-2 | 61112-96004 | •RUBBER, engine lower | - | 1 | from 61112-96003 |
| 3 | 61113-98500 | SEAL, engine lower | 1 | 1 | |
| 4 | 09100-06020 | BOLT (6x20) | 6 | 6 | |
| 5 | 09162-06001 | LOCK WASHER | 6 | 6 | |
| 6-1 | 61400-98830-01T | COVER SET, engine | 1 | 1 | to 61400-98831-01T |
| 6-2 | 61400-98831-01T | COVER SET, engine | - | 1 | |
| 6-3 | 61400-98832-01T | COVER SET, engine | - | 1 | from 61400-98831-01T |
| 7-1 | 61422-98500 | •EMBLEM, front | 1 | 1 | |
| 7-2 | 61422-98501 | •EMBLEM, front | - | 1 | |
| 8-1 | 61435-98500 | •EMBLEM, rear | 1 | 1 | |
| 8-2 | 61435-98501 | •EMBLEM, rear | - | 1 | |
| 9-1 | 61441-98500 | •EMBLEM, cover side | 2 | 2 | |
| 9-2 | 61441-98410 | •EMBLEM, cover side | - | 2 | from 61441-98401 |
| 10-1 | 61443-98500 | •DICURL, cover side RH | 1 | 1 | |
| 10-2 | 61443-98501 | •DICURL, cover side RH | - | 1 | |
| 11-1 | 61453-98500 | •DICURL, cover side LH | 1 | 1 | |
| 11-2 | 61453-98501 | •DICURL, cover side LH | - | 1 | |
| 12-1 | 21131-96001 | •MARK, clutch shifting | 1 | 1 | to 21131-96002 |
| 12-2 | 21131-98500 | •MARK, clutch shifting | - | 1 | |
| 13-1 | 61458-95201 | MARK, safety warning | 1 | 1 | |
| 13-2 | 61458-98500 | MARK, safety warning | - | 1 | |
| 14-1 | 61457-93001 | MARK, warning | 1 | 1 | |
| 14-2 | 61457-98500 | MARK, warning | - | 1 | |
| 15 | 61631-96001 | HOOK, lower cover | 1 | 1 | |
| 16 | 61633-96002-01J | LEVER, hook | 1 | 1 | |
| 17 | 01107-06108 | BOLT | 1 | 1 | |
| 18 | 08322-21068 | WASHER | 1 | 1 | |
| 19 | 09164-13001 | WASHER, wave | 1 | 1 | |
| 20 | 09306-13002 | BUSHING, hook lever | 1 | 1 | |

FIG. 68

H - 9



21

FIG. 68 ENGINE COVER

| Ref. No. | Part No. | Description | Qty | | Remarks |
|----------|-----------------|---------------------------|-----|---|---------|
| | | | D | F | |
| 21 | 61131-98500-01J | COVER, engine cover lower | 1 | 1 | |
| 22-1 | 09100-06020 | BOLT (6x20) | 3 | - | |
| 22-2 | 03112-06209 | SCREW | - | 3 | |
| 23 | 09162-06001 | LOCK WASHER | 3 | - | |
| 24-1 | 61521-96000 | HOLDER, shear pin | 1 | 1 | D:11φ |
| 24-2 | 61521-98400 | HOLDER, shear pin | - | 1 | D:15φ |
| 25 | 37101-93301 | CAP, engine lower | 1 | 1 | |

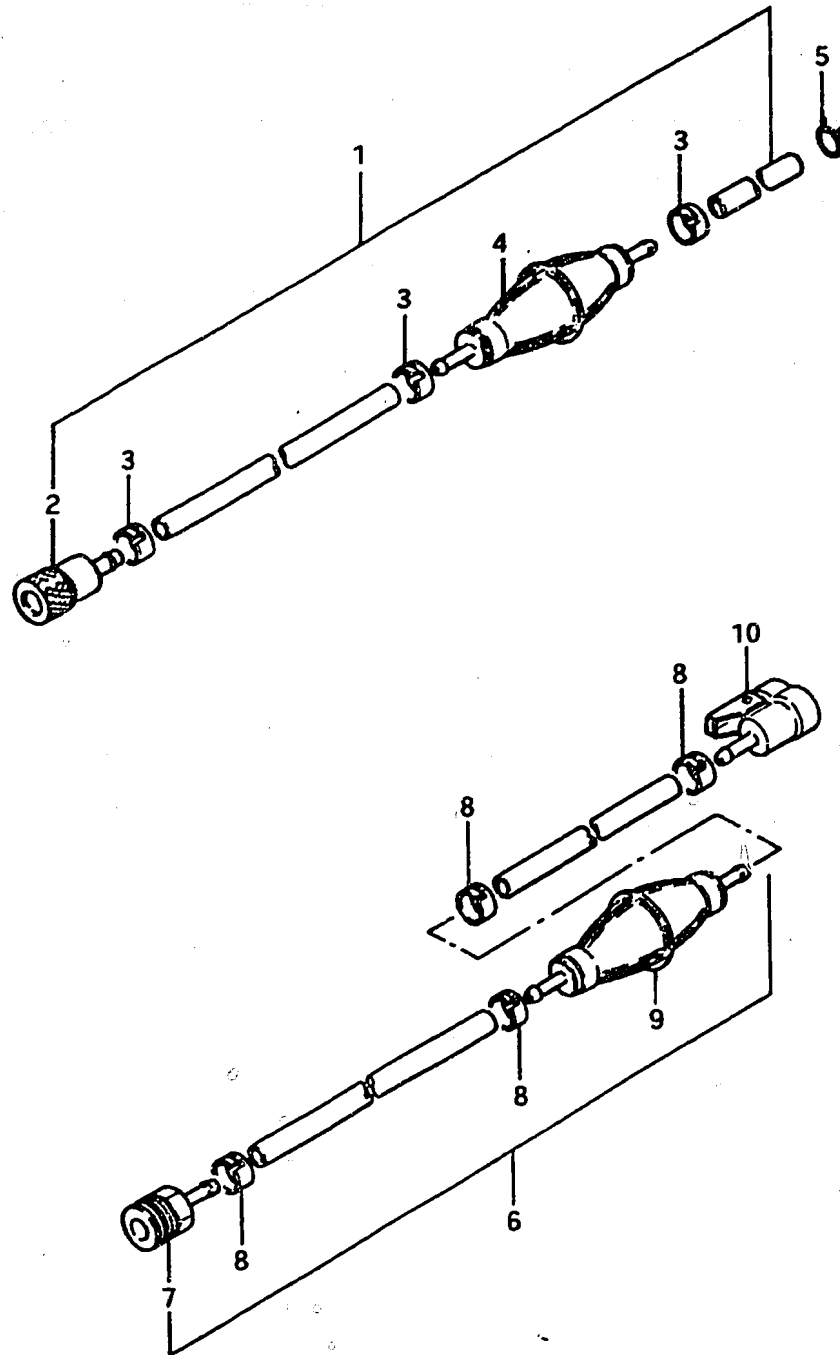


FIG.1

K - 3

1

FIG.1 FUEL HOSE

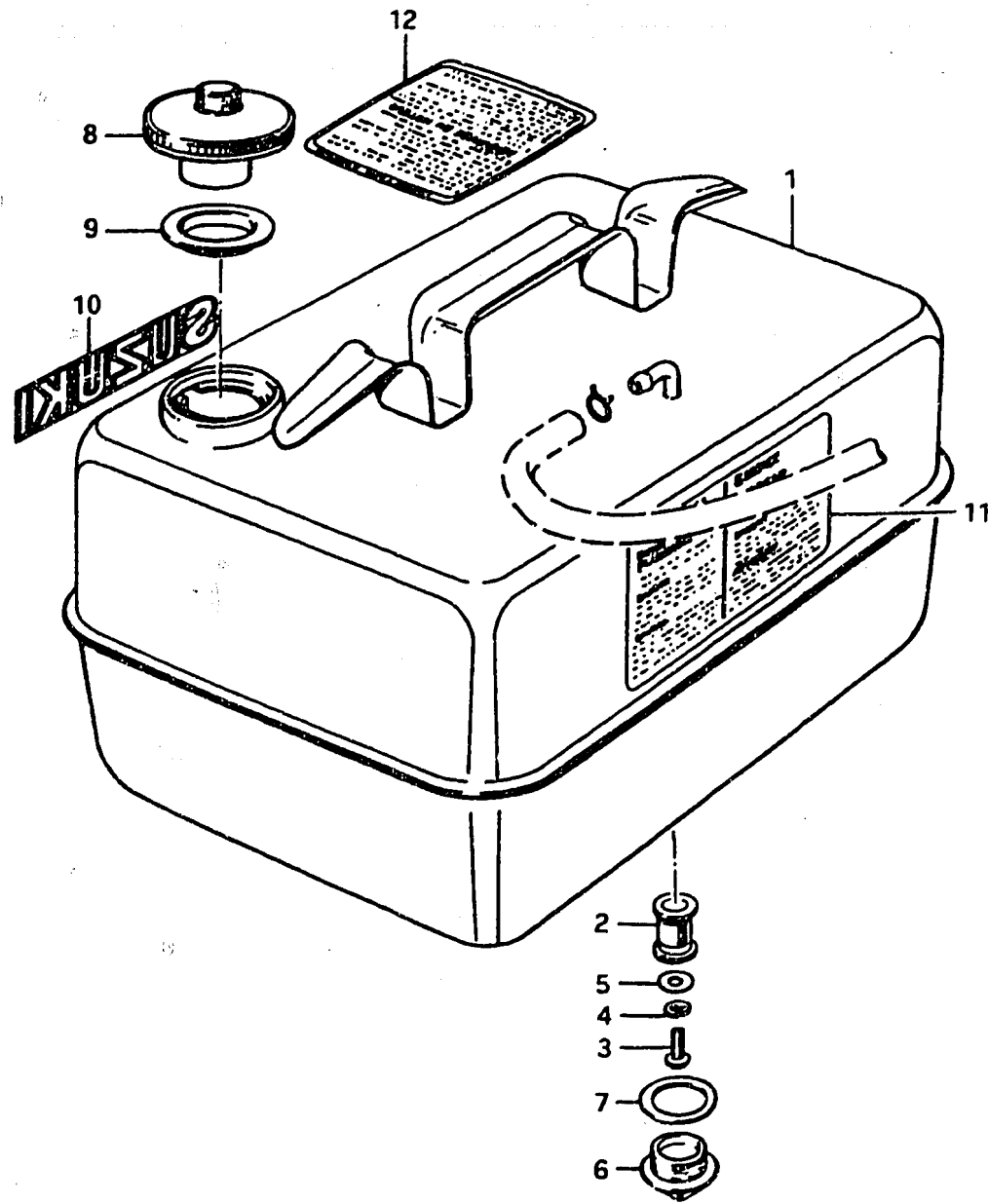


| Ref. No. | Part No. | Description | Q'ty | | Remarks |
|---|-------------|-----------------|------|---|------------------------------------|
| | | | D | F | |
| (DT5DE1, DT3.5FE16, DT5FE1, DT7.5FE1, DT9FE1) | | | | | |
| 1-1 | 65700-98500 | HOSE ASSY, fuel | 1 | 1 | to 65700-98501 |
| 1-2 | 65700-98501 | HOSE ASSY, fuel | - | 1 | to 65700-98502 |
| 1-3 | 65700-98502 | HOSE ASSY, fuel | - | 1 | to 65700-98503 |
| 1-4 | 65700-98503 | HOSE ASSY, fuel | - | 1 | |
| 1-5 | 65700-98992 | HOSE ASSY, fuel | - | 1 | from 65700-98503 |
| 2-1 | 65750-98500 | •SOCKET | 1 | 1 | to 65750-98501 |
| 2-2 | 65750-98501 | •SOCKET | - | 1 | to 65750-98502 |
| 2-3 | 65750-98502 | •SOCKET | - | 1 | |
| 2-4 | 65750-98990 | •SOCKET | - | 1 | from 65750-98502 to 65750-98505 |
| 3 | 09401-13402 | •CLIP | 3 | 3 | |
| 4-1 | 65770-99700 | •PUMP, squeeze | 1 | 1 | to 65770-99701 |
| 4-2 | 65770-99701 | •PUMP, squeeze | - | 1 | to 65770-99702 |
| 4-3 | 65770-99702 | •PUMP, swueeze | - | 1 | |
| 5 | 09401-11402 | CLIP | 1 | 1 | |
| 6-1 | 65700-98510 | HOSE ASSY, fuel | 1 | 1 | to 65700-98511 |
| 6-2 | 65700-98511 | HOSE ASSY, fuel | - | 1 | to 65700-98512 |
| 6-3 | 65700-98512 | HOSE ASSY, fuel | - | 1 | to 65700-98513 |
| 6-4 | 65700-98513 | HOSE ASSY, fuel | - | 1 | |
| 6-5 | 65700-98990 | HOSE ASSY, fuel | - | 1 | from 65700-98513 to 65700-95991 |
| 7-1 | 65750-98500 | •SOCKET | 1 | 1 | to 65750-98501 |
| 7-2 | 65750-98501 | •SOCKET | - | 1 | to 65750-98502 |
| 7-3 | 65750-98502 | •SOCKET | - | 1 | E13 |
| 7-4 | 65750-98990 | •SOCKET | - | 1 | from 65750-98502 to 65750-98505 |
| 8 | 09401-13402 | •CLIP | 4 | 4 | |
| 9-1 | 65770-99700 | •PUMP, squeeze | 1 | 1 | to 65770-99701 |
| 9-2 | 65770-99701 | •PUMP, squeeze | - | 1 | to 65770-99701 |
| 9-3 | 65770-99702 | •PUMP, squeeze | - | 1 | |
| 10 | 65750-99700 | •SOCKET | 1 | 1 | |

FIG.2

K - 4

FIG.2 FUEL TANK (OLD TYPE / DT5D)



| Ref. No. | Part No. | Description | D | Remarks |
|----------|-------------|---|---|----------------|
| 1 | 65800-98820 | TANK SET (15ℓ) (4 U.S.GAL.) (3.3 IMP.GAL.) | 1 | to 65800-98821 |
| 2 | 65830-93301 | •FILTER | 1 | |
| 3 | 02112-05088 | •SCREW | 1 | |
| 4 | 08321-21058 | •LOCK WASHER | 1 | |
| 5 | 08322-21058 | •WASHER | 1 | |
| 6 | 09247-25001 | •PLUG, fuel drain | 1 | |
| 7 | 09168-25002 | •GASKET, drain plug | 1 | |
| 8 | 65510-96000 | •CAP, fuel tank | 1 | |
| 9 | 44248-12000 | •GASKET, tank cap | 1 | |
| 10 | 61441-98500 | •EMBLEM, tank side | 1 | |
| 11 | 65316-93300 | •MARK, fuel caution | 1 | to 65316-93301 |
| 12 | 65511-93602 | MARK, starter indicate | 1 | |

FIG.3

K - 5

FIG.3 FUEL TANK (OLD TYPE / DT5DE13)

Q'ty

| Ref. No. | Part No. | Description | D | Remarks |
|----------|-------------|---|---|----------------|
| 1 | 65800-98830 | TANK SET (15ℓ) (4 U.S.GAL.) (3.3 IMP.GAL.) to (65800-98842)+(65850-98500) | 1 | |
| 2 | 65850-99701 | •GAUGE ASSY, fuel | 1 | |
| 3 | 65853-93001 | ••STRAINER, fuel gauge | 1 | |
| 4 | 65854-93000 | ••GASKET, strainer | 1 | to 65854-93001 |
| 5 | 65862-93000 | ••GASKET, float arm holder | 1 | |
| 6 | 65864-93000 | ••FLOAT | 1 | |
| 7 | 02112-04108 | ••SCREW | 2 | |
| 8 | 65830-93301 | ••FILTER | 1 | |
| 9 | 02112-05088 | ••SCREW | 1 | |
| 10 | 08321-21058 | ••LOCK WASHER | 1 | |
| 11 | 08322-21058 | ••WASHER | 1 | |
| 12 | 65871-93001 | •GASKET, fuel gauge | 1 | |
| 13 | 01107-06168 | •BOLT | 3 | |
| 14 | 01107-06408 | •BOLT | 1 | |
| 15 | 08322-11068 | •WASHER | 4 | |
| 16 | 65510-96000 | •CAP, fuel tank | 1 | |
| 17 | 44248-12000 | •GASKET, tank cap | 1 | |
| 18 | 61441-98500 | •EMBLEM, fuel tank | 2 | |

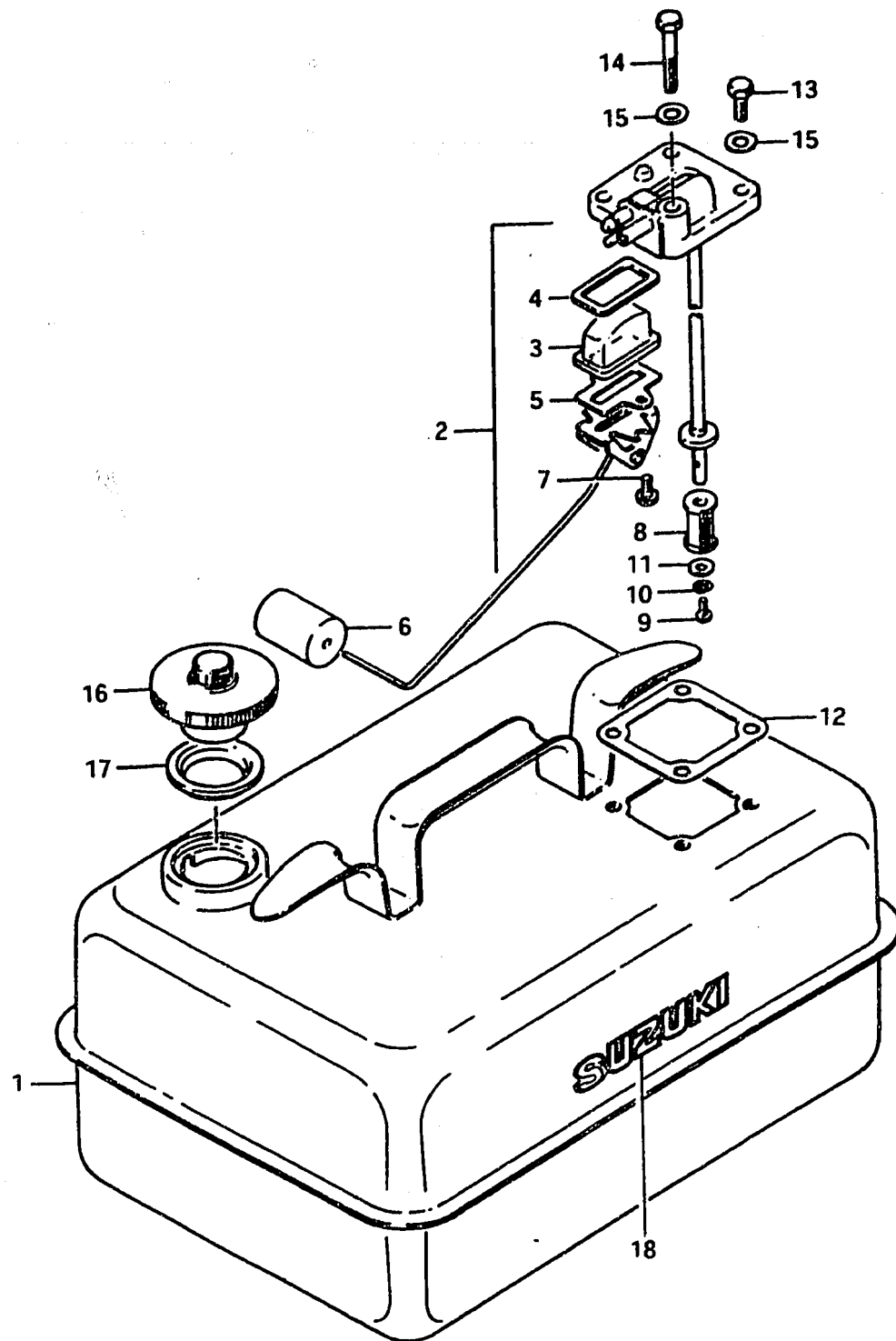
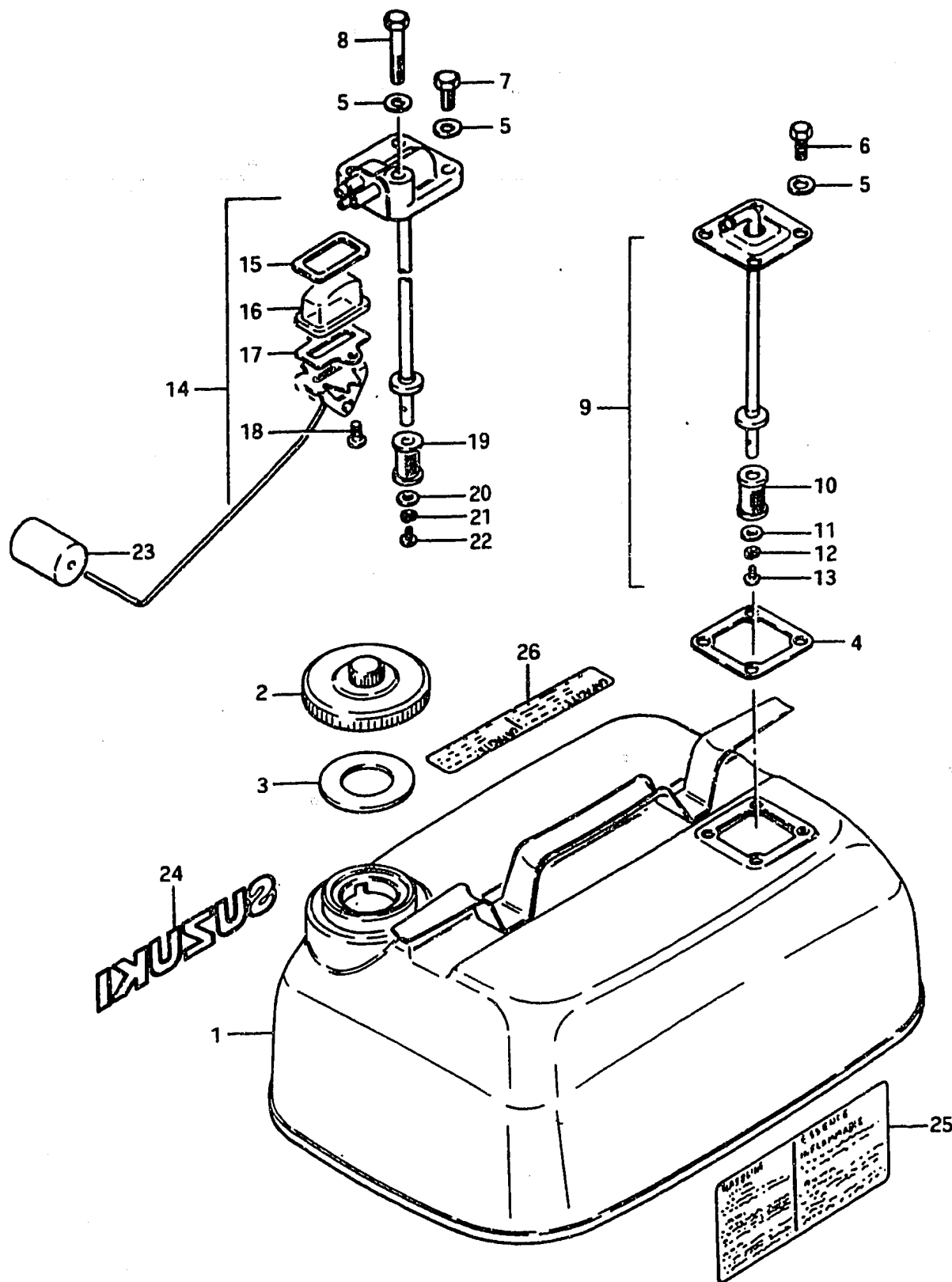


FIG.7

K - 9



7

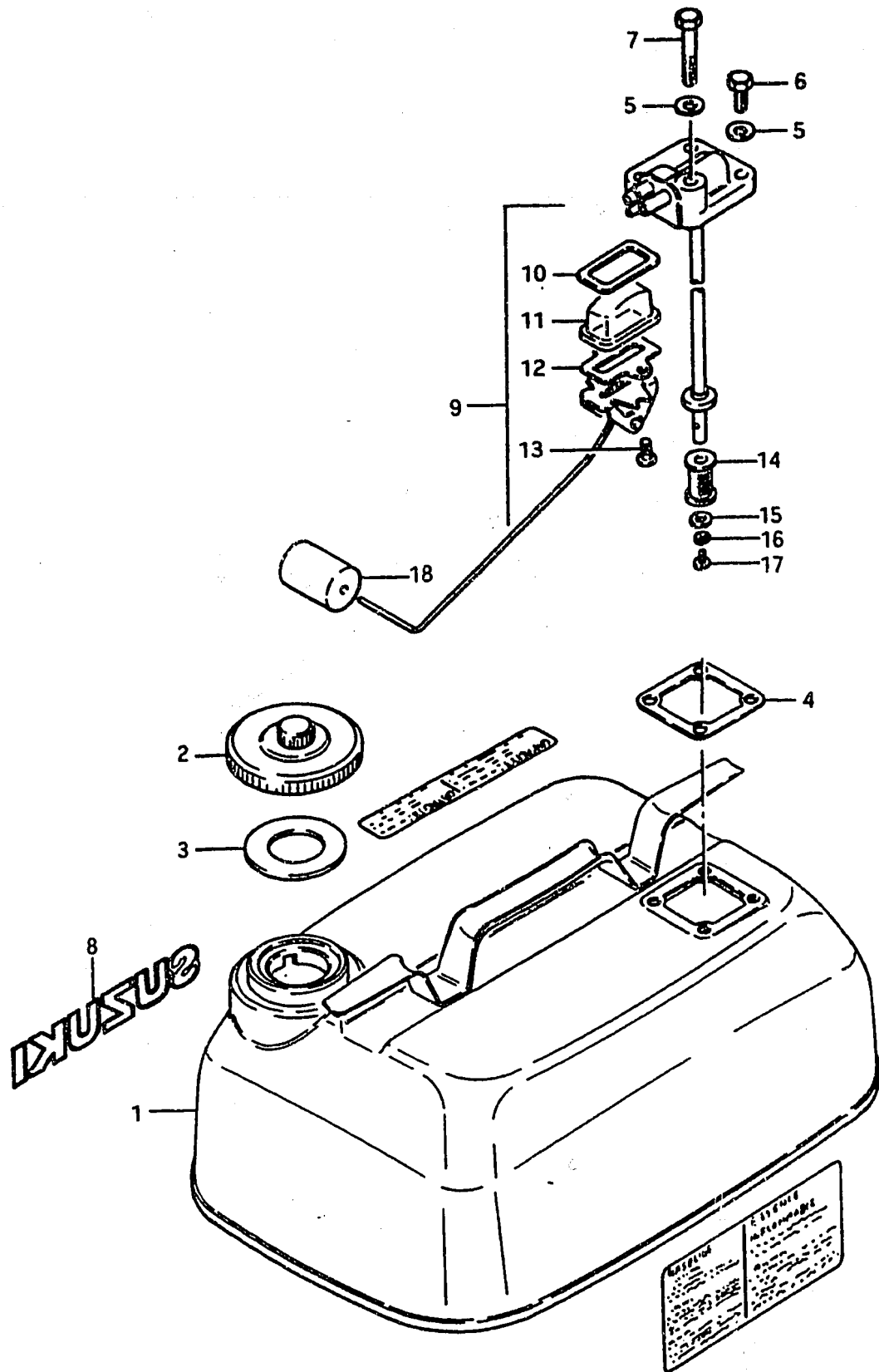
FIG.7 FUEL TANK (NEW TYPE)

| Ref. No. | Part No. | Description | Q'ty | Remarks |
|----------|-------------|--|------|-------------------|
| | | (DT3.5FE16, DT5FE1 OPT, DT7.5FE1, DT9FE1) | | |
| 1 | 65800-98840 | TANK SET (15ℓ) (4 U.S.GAL.) (3.3 IMP.GAL) to (65800-98841)+(61441-98500)+(65316-93301) | 1 | |
| 2-1 | 65510-98500 | •CAP ASSY | 1 | to 65510-98501 |
| 2-2 | 65510-98501 | •CAP ASSY | 1 | to 65510-98502 |
| 2-3 | 65510-98502 | •CAP ASSY | 1 | to 65510-98503 |
| 3-1 | 65561-98500 | •GASKET | 1 | to 65561-98501 |
| 3-2 | 65561-98501 | •GASKET | 1 | |
| 4 | 65871-93001 | •GASKET, fuel gauge | 1 | |
| 5 | 08322-21068 | •WASHER | 4 | |
| 6 | 01107-06168 | •BOLT | 4 | |
| 7 | 01107-06168 | •BOLT | 3 | DT5FE13,DT7.5FE13 |
| 8 | 01107-06408 | •BOLT | 1 | |
| 9 | 65880-98500 | OUTLET, separate tank | 1 | |
| 10 | 65830-93301 | •FILTER | 1 | |
| 11 | 08322-21058 | •WASHER | 1 | |
| 12 | 08321-21058 | •LOCK WASHER | 1 | |
| 13 | 02112-05088 | •SCREW | 1 | |
| 14-1 | 65850-98500 | GAUGE ASSY, fuel | 1 | to 65850-98501 |
| 14-2 | 65850-98501 | GAUGE ASSY, fuel | 1 | |
| 15-1 | 65854-93000 | •GASKET | 1 | to 65854-93001 |
| 15-2 | 65854-93001 | •GASKET | 1 | |
| 16 | 65853-93001 | •STRAINER | 1 | |
| 17 | 65862-93000 | •GASKET, arm holder | 1 | DT5FE13,DT7.5FE13 |
| 18 | 02112-04108 | •SCREW | 2 | |
| 19 | 65830-93301 | •FILTER | 1 | |
| 20 | 08322-21058 | •WASHER | 1 | |
| 21 | 08321-21058 | •LOCK WASHER | 1 | |
| 22 | 02112-05088 | •SCREW | 1 | |
| 23 | 65864-93000 | •FLOAT | 1 | |
| 24 | 61441-98500 | EMBLEM, side | 1 | |
| 25-1 | 65316-93300 | MARK, fuel caution | 1 | to 65316-93301 |
| 25-2 | 65316-93301 | MARK, fuel caution | 1 | to 65316-93302 |
| 25-3 | 65316-93302 | MARK, fuel caution | 1 | to 65316-93303 |
| 26 | 65317-98500 | MARK, fuel capacity | 1 | |

FIG. 8

K - 10

FIG. 8 FUEL TANK (NEW TYPE / DT9FE13)

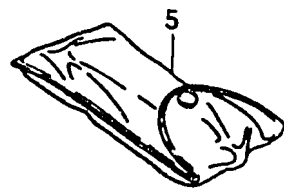
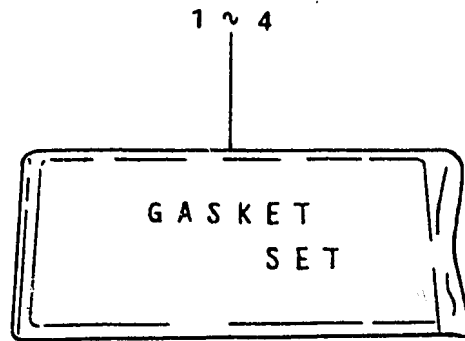


| Ref. No. | Part No. | Description | Q'ty | Remarks |
|----------|-------------|---|------|------------------------------|
| 1-1 | 65800-95810 | TANK SET (23ℓ)(6 U.S.GAL.)(5 IMP.GAL.) | 1 | Ref.No.1~8 to 65800-95811 |
| 1-2 | 65800-95811 | TANK SET | 1 | Ref.No.1~7 to 65800-95812 |
| 1-3 | 65800-95812 | TANK SET | 1 | Ref.No.1~7 to 65800-95813 |
| 1-4 | 65800-95813 | TANK SET | 1 | Ref.No.1~7 to 65800-95814 |
| 2-1 | 65510-98500 | •CAP ASSY | 1 | to 65510-98501 |
| 2-2 | 65510-98501 | •CAP ASSY | 1 | to 65510-98502 |
| 2-3 | 65510-98502 | •CAP ASSY | 1 | to 65510-98503 |
| 3-1 | 65561-98500 | •GASKET | 1 | to 65561-98501 |
| 3-2 | 65561-98501 | ••GASKET | 1 | |
| 4 | 65871-93001 | •GASKET, fuel gauge | 1 | |
| 5 | 08322-21068 | •WASHER | 4 | |
| 6 | 01107-06168 | •BOLT | 3 | |
| 7 | 01107-06408 | •BOLT | 1 | |
| 8 | 61441-98500 | EMBLEM, tank side | 2 | |
| 9-1 | 65850-95200 | GAUGE ASSY, fuel | 1 | to 65850-95201 |
| 9-2 | 65850-95201 | GAUGE ASSY, fuel | 1 | |
| 10-1 | 65854-93000 | •GASKET, strainer | 1 | to 65854-93001 |
| 10-2 | 65854-93001 | •GASKET, strainer | 1 | |
| 11 | 65853-93001 | •STRAINER | 1 | |
| 12 | 65862-93000 | •GASKET | 1 | |
| 13 | 02112-04108 | •SCREW | 2 | |
| 14 | 65830-93301 | •FILTER | 1 | |
| 15 | 08322-21058 | •WASHER | 1 | |
| 16 | 08321-21058 | •LOCK WASHER | 1 | |
| 17 | 02112-05088 | •SCREW | 1 | |
| 18 | 65864-93000 | •FLOAT | 1 | |

FIG.9

K - 11

FIG.9 OPT : GASKET / TOOL SET



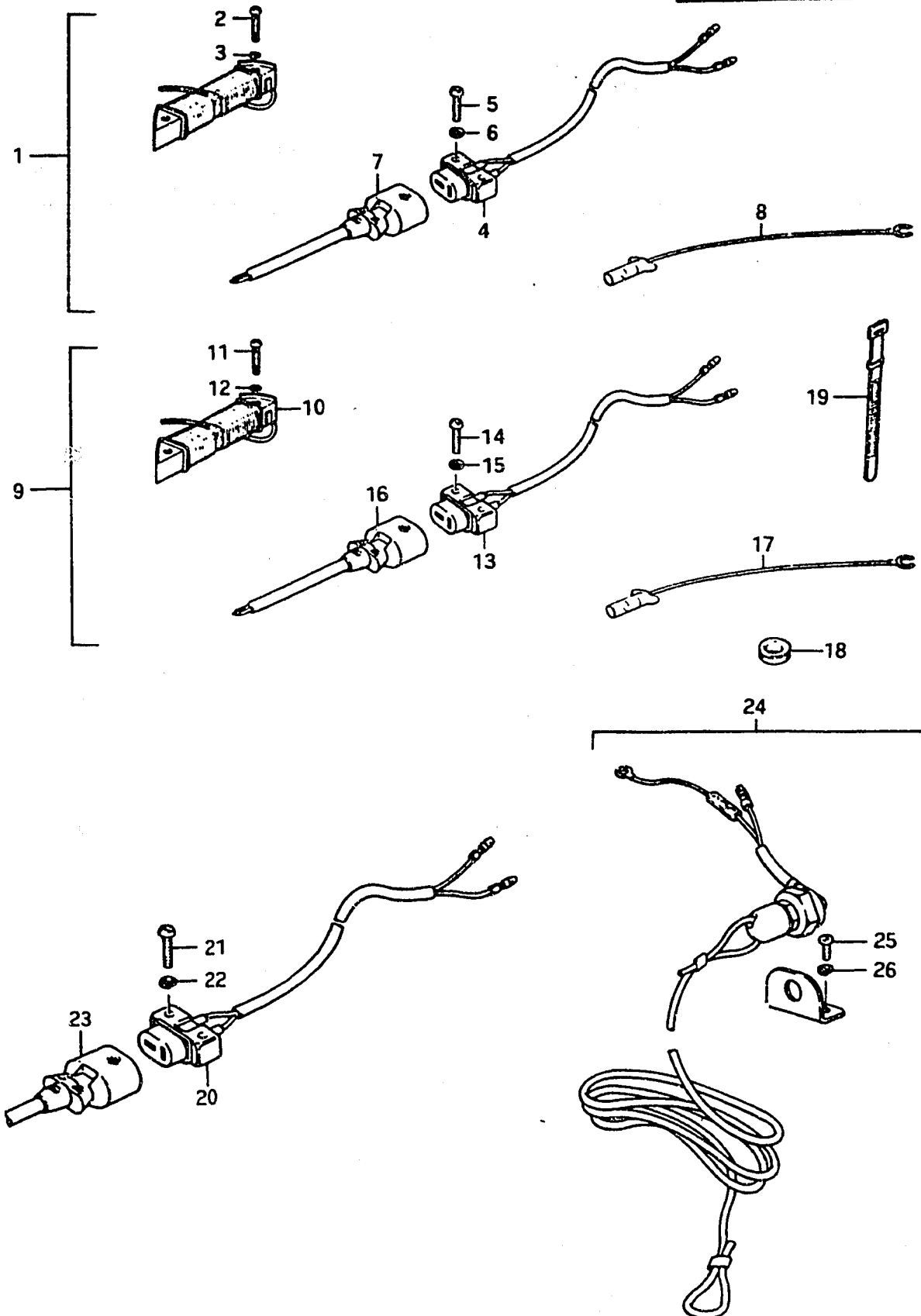
| Ref. No. | Part No. | Description | Q'ty | Remarks |
|----------|-------------|----------------------|------|--|
| 1 | 11400-98840 | GASKET SET (ENGINE) | 1 | DT3.5 |
| 2 | 11400-98820 | GASKET SET (ENGINE) | 1 | DT4,DT4.5 |
| 3-1 | 11400-98830 | GASKET SET (ENGINE) | 1 | DT5D, to 11400-98831 |
| 3-2 | 11400-98832 | GASKET SET (ENGINE) | 1 | DT5F to 11400-98833 to 11400-98834 |
| 3-3 | 11400-98833 | GASKET SET (ENGINE) | 1 | |
| 4 | 11400-96820 | GASKET SET (ENGINE) | 1 | DT7.5,DT9 to 11400-96821 |
| 5-1 | 09800-00128 | TOOL SET (DT3.5~DT9) | 1 | to 09800-00805 |
| 5-2 | 09800-00178 | TOOL SET (DT2) | 1 | to 09800-00805 |

FIG.10

K - 12

10

FIG.10 OPT : LIGHTING COIL, EMERGENCY SWITCH



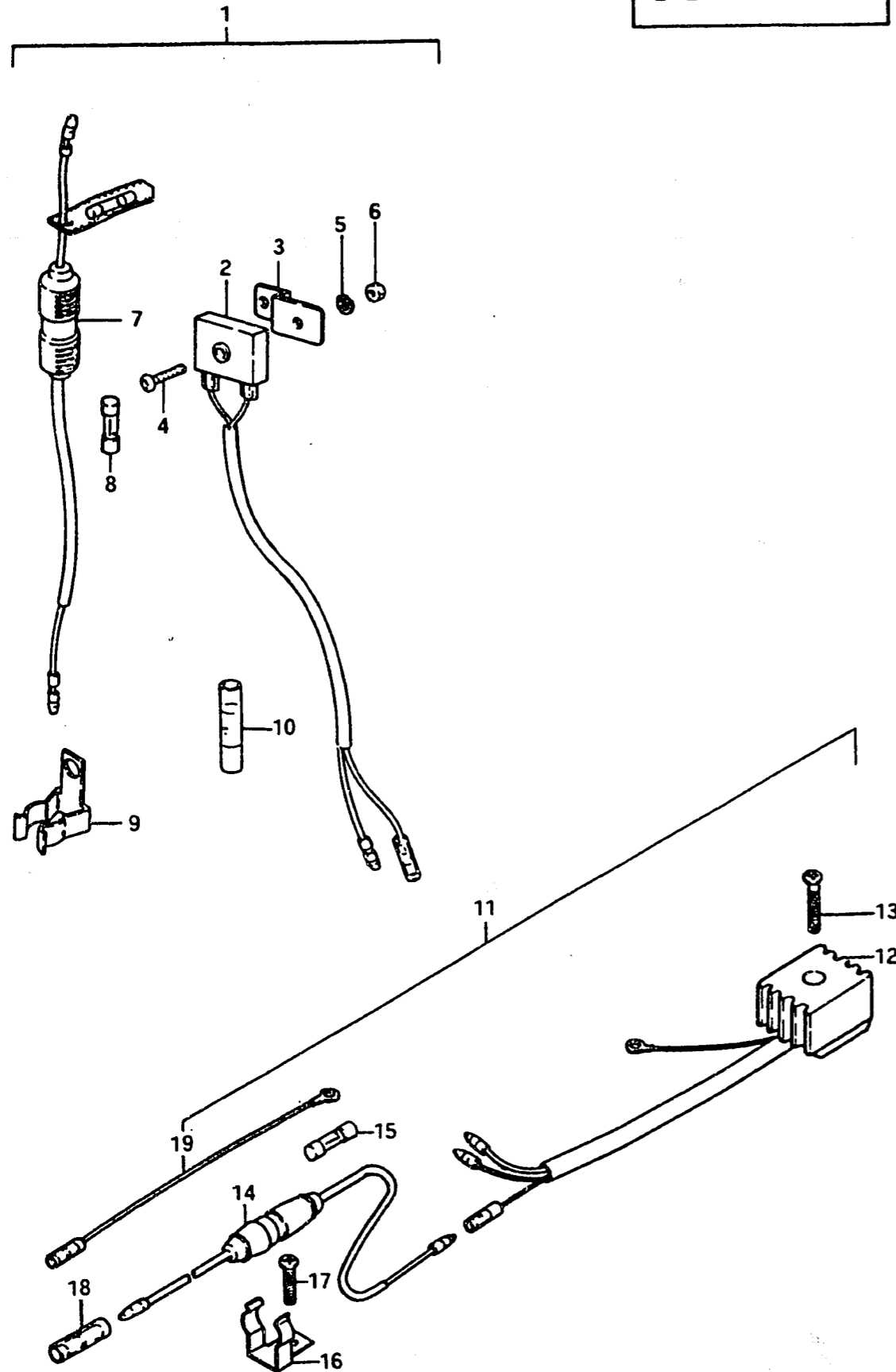
| Ref. No. | Part No. | Description | Q'ty | Remarks |
|----------|-------------|---|------|---------------------------|
| 1 | 32200-98821 | COIL SET, lighting to (32200-98300)+(39600-98300) | 1 | DT2 DT3.5 DT4,DT4.5 |
| 2 | 02112-05258 | •SCREW | 2 | |
| 3 | 08321-21058 | •LOCK WASHER | 2 | |
| 4 | 39601-96711 | •SOCKET ASSY | 1 | |
| 5 | 02112-04208 | •SCREW | 2 | |
| 6 | 08322-21048 | •WASHER | 2 | |
| 7 | 39602-99711 | •PLUG ASSY, lighting | 1 | |
| 8 | 36898-93300 | •LEAD WIRE, earth | 1 | |
| 9 | 32200-98832 | COIL SET, lighting | 1 | DT5 |
| 10 | 32120-98520 | •COIL, lighting | 1 | |
| 11 | 02112-06258 | •SCREW | 2 | |
| 12 | 08321-21068 | •LOCK WASHER | 2 | |
| 13 | 39601-96711 | •SOCKET ASSY | 1 | |
| 14 | 02112-04258 | •SCREW | 2 | |
| 15 | 08322-21048 | •WASHER | 2 | |
| 16 | 39602-99711 | •PLUG, lighting | 1 | |
| 17 | 36898-93300 | •LEAD WIRE, earth | 1 | DT7.5,DT9 |
| 18 | 09308-10002 | •GROMMET, lead wire | 1 | |
| 19 | 09407-12402 | •CLAMP, lead wire | 1 | |
| 20 | 39601-96711 | •SOCKET ASSY | 1 | |
| 21 | 02112-04208 | •SCREW | 2 | |
| 22 | 08322-21048 | •WASHER | 2 | |
| 23 | 39602-99711 | •PLUG, lighting | 1 | |
| 24-1 | 37800-93812 | SWITCH SET, emergency from 37800-93811 | 1 | |
| 24-2 | 37800-93813 | SWITCH SET, emergency from 37800-93812 | 1 | DT2~DT9 |
| 25 | 09125-04011 | •SCREW | 2 | |
| 26 | 09162-04002 | •LOCK WASHER | 2 | |

FIG. 11

K - 13

11

FIG.11 OPT : RECTIFIRE

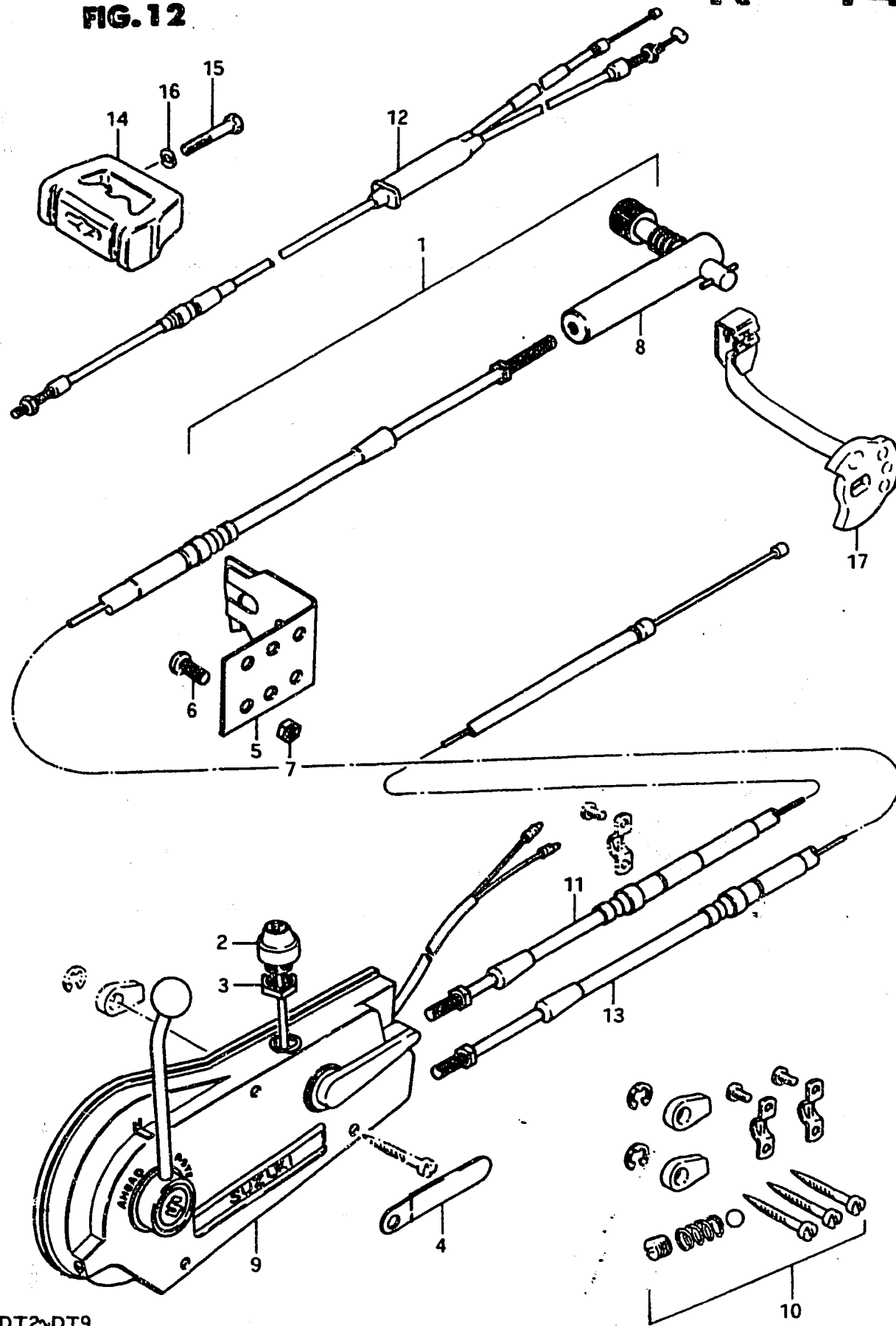


| Ref. No. | Part No. | Description | Q'ty | Remarks |
|----------|-------------|--------------------------------------|------|----------------|
| 1-1 | 32800-98810 | RECTIFIRE SET | 1 | to 32800-98811 |
| 1-2 | 32800-98811 | RECTIFIRE SET | 1 | |
| 2 | 32800-95220 | •RECTIFIRE ASSY | 1 | to 32801-98300 |
| 3 | 32890-98000 | •STAY, rectifire | 1 | |
| 4 | 02112-05208 | •SCREW | 1 | DT3.5 |
| 5 | 08321-21058 | •LOCK WASHER | 1 | |
| 6 | 08310-11058 | •NUT | 1 | |
| 7 | 36740-95252 | •CASE ASSY, fuse from 36740-95251 | 1 | DT5 |
| 8 | 09481-20001 | ••FUSE (20A) | 1 | |
| 9 | 36791-95200 | •HOLDER, fuse case | 1 | to 32800-96811 |
| 10 | 37132-93700 | •CONNECTOR | 1 | |
| 11-1 | 32800-96810 | RECTIFIRE SET | 1 | to 32800-96811 |
| 11-2 | 32800-96811 | RECTIFIRE SET | 1 | |
| 12 | 32800-95720 | •RECTIFIRE ASSY | 1 | DT7.5,DT9 |
| 13 | 02112-05258 | •SCREW | 1 | |
| 14 | 36740-95252 | •CASE ASSY, fuse from 36740-95251 | 1 | |
| 15 | 09481-20001 | ••FUSE (20A) | 1 | DT7.5,DT9 |
| 16 | 36791-95200 | •HOLDER, fuse case | 1 | |
| 17 | 09125-06020 | •SCREW, fuse case | 1 | DT7.5,DT9 |
| 18 | 37132-93700 | •CONNECTOR | 1 | |
| 19 | 36898-93300 | •LEAD WIRE, earth | 1 | |

FIG.12

K - 14 12

FIG.12 OPT : REMOTE CONTROL (DT5 D/F, DT7.5)

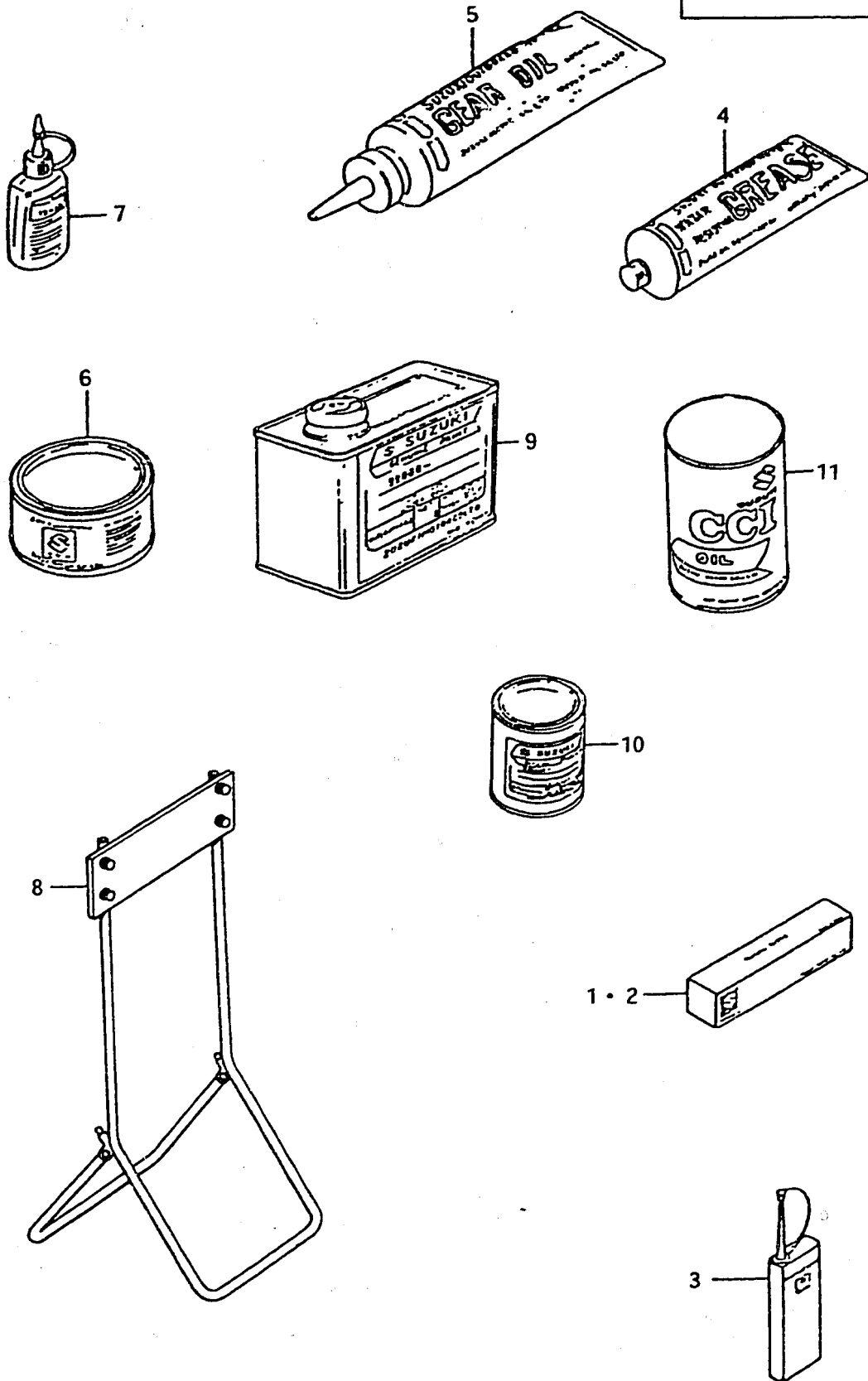


| Ref. No. | Part No. | Description | Q'ty | | | Remarks |
|----------|-----------------|--------------------------------|------|---|---|----------------|
| | | | C | D | F | |
| 1-1 | 67130-93200 | REMOTE CONTROL PARTS | 1 | 1 | 1 | to 67130-93201 |
| 1-2 | 67130-93201 | REMOTE CONTROL PARTS | - | - | 1 | to 67130-93202 |
| 2-1 | 37870-93703 | •SWITCH ASSY, engine stop | 1 | - | - | to 37870-93704 |
| 2-2 | 37870-93704 | •SWITCH ASSY, engine stop | - | 1 | 1 | |
| 3 | 09140-14014 | •NUT | 1 | 1 | 1 | |
| 4 | 09404-06401 | •CLAMP | 1 | 1 | 1 | |
| 5 | 67345-93701 | •STOPPER, remote control cable | 1 | 1 | 1 | |
| 6 | 09125-05028 | •SCREW | 2 | 2 | 2 | |
| 7 | 09140-05001 | •NUT | 2 | 2 | 2 | |
| 8 | 67440-93701 | •GUIDE, clutch cable | 1 | 1 | 1 | |
| 9-1 | 67200-93200 | REMOTE CONTROL BOX ASSY | 1 | 1 | 1 | to 67200-93201 |
| 9-2 | 67200-93201 | REMOTE CONTROL BOX ASSY | - | - | 1 | DT5 (D,F) |
| 10 | 67300-95810 | •HOLDER SET, control cable | 1 | 1 | 1 | DT7.5 |
| 11-1 | 67310-93600 | CABLE ASSY, throttle | 1 | 1 | 1 | 2.5M |
| 11-2 | 67310-93610 | CABLE ASSY, throttle | 1 | 1 | 1 | 3.0M |
| 11-3 | 67310-93620 | CABLE ASSY, throttle | 1 | 1 | 1 | 3.5M |
| 11-4 | 67310-93630 | CABLE ASSY, throttle | 1 | 1 | 1 | 4.0M |
| 11-5 | 67310-93640 | CABLE ASSY, throttle | 1 | 1 | 1 | 4.5M |
| 11-6 | 67310-93650 | CABLE ASSY, throttle | 1 | 1 | 1 | 5.0M |
| 12-1 | 67310-98500 | CABLE ASSY, throttle | - | 1 | 1 | 2.5M |
| 12-2 | 67310-98510 | CABLE ASSY, throttle | - | 1 | 1 | 3.0M |
| 12-3 | 67310-98520 | CABLE ASSY, throttle | - | 1 | 1 | 3.5M |
| 12-4 | 67310-98530 | CABLE ASSY, throttle | - | 1 | 1 | 4.0M |
| 12-5 | 67310-98540 | CABLE ASSY, throttle | - | 1 | 1 | 4.5M |
| 12-6 | 67310-98550 | CABLE ASSY, throttle | - | 1 | 1 | 5.0M |
| 13-1 | 67320-95750 | CABLE ASSY, clutch | 1 | 1 | 1 | 2.5M |
| 13-2 | 67320-95740 | CABLE ASSY, clutch | 1 | 1 | 1 | 3.0M |
| 13-3 | 67320-95730 | CABLE ASSY, clutch | 1 | 1 | 1 | 3.5M |
| 13-4 | 67320-95720 | CABLE ASSY, clutch | 1 | 1 | 1 | 4.0M |
| 13-5 | 67320-95710 | CABLE ASSY, clutch | 1 | 1 | 1 | 4.5M |
| 13-6 | 67320-95200 | CABLE ASSY, clutch | 1 | 1 | 1 | 5.0M |
| 14 | 67112-99700-01J | HOLDER, remote control | 1 | 1 | 1 | |
| 15 | 09100-06049 | BOLT | 2 | 2 | 2 | |
| 16 | 09162-06001 | LOCK WASHER | 2 | 2 | 2 | |
| 17 | 67450-98500 | LEVER, clutch | - | 1 | 1 | DT5 |

FIG.14

L - 2

FIG.14 OPTIONAL



| Ref. No. | Part No. | Description | Q'ty | Remarks |
|----------|-----------------|----------------------------|------|-------------------------|
| 1 | 99000-31030 | GASKET, liquid | 1 | for crankcase,100g |
| 2 | 99000-31050 | GASKET, liquid | 1 | for gear case,100g |
| 3 | 99000-32040 | CEMENT, thread lock | 1 | 200g |
| 4-1 | 99000-25160 | GREASE, water resistant | 1 | 250g |
| 4-2 | 99000-25170 | GREASE, water resistant | 1 | 50g |
| 5 | 99000-22540 | GEAR OIL, outboard motor | 1 | 400cc |
| 6 | 99000-25010 | SUZUKI SUPER GREASE A | 1 | 450g,for crank oil seal |
| 7 | 99000-32030 | SUZUKI LOCK SUPER | 1 | 50g (1303B) |
| 8 | 09914-39911 | HANGER, engine | 1 | |
| 9-1 | 99000-10105-01T | PAINT (500g) | 1 | |
| 9-2 | 99000-10205-01J | PAINT (500g) | 1 | |
| 10-1 | 99000-10109-01T | PAINT (90g) | 1 | |
| 10-2 | 99000-10209-01J | PAINT (90g) | 1 | |
| 11-1 | 99000-21460 | CCI OIL (1ℓx24,Mitsubishi) | 1 | |
| 11-2 | 99000-21145 | CCI OIL (1ℓx24,Shell) | 1 | |
| 11-3 | 99000-21021 | CCI OIL (4ℓx6) | 1 | |
| 11-4 | 99000-21150 | CCI OIL (200ℓ) | 1 | |
| 11-5 | 99000-21250 | CCI SUPER OIL (1ℓx24) | 1 | |
| 11-6 | 99000-21260 | CCI SUPER OIL (4ℓx6) | 1 | |